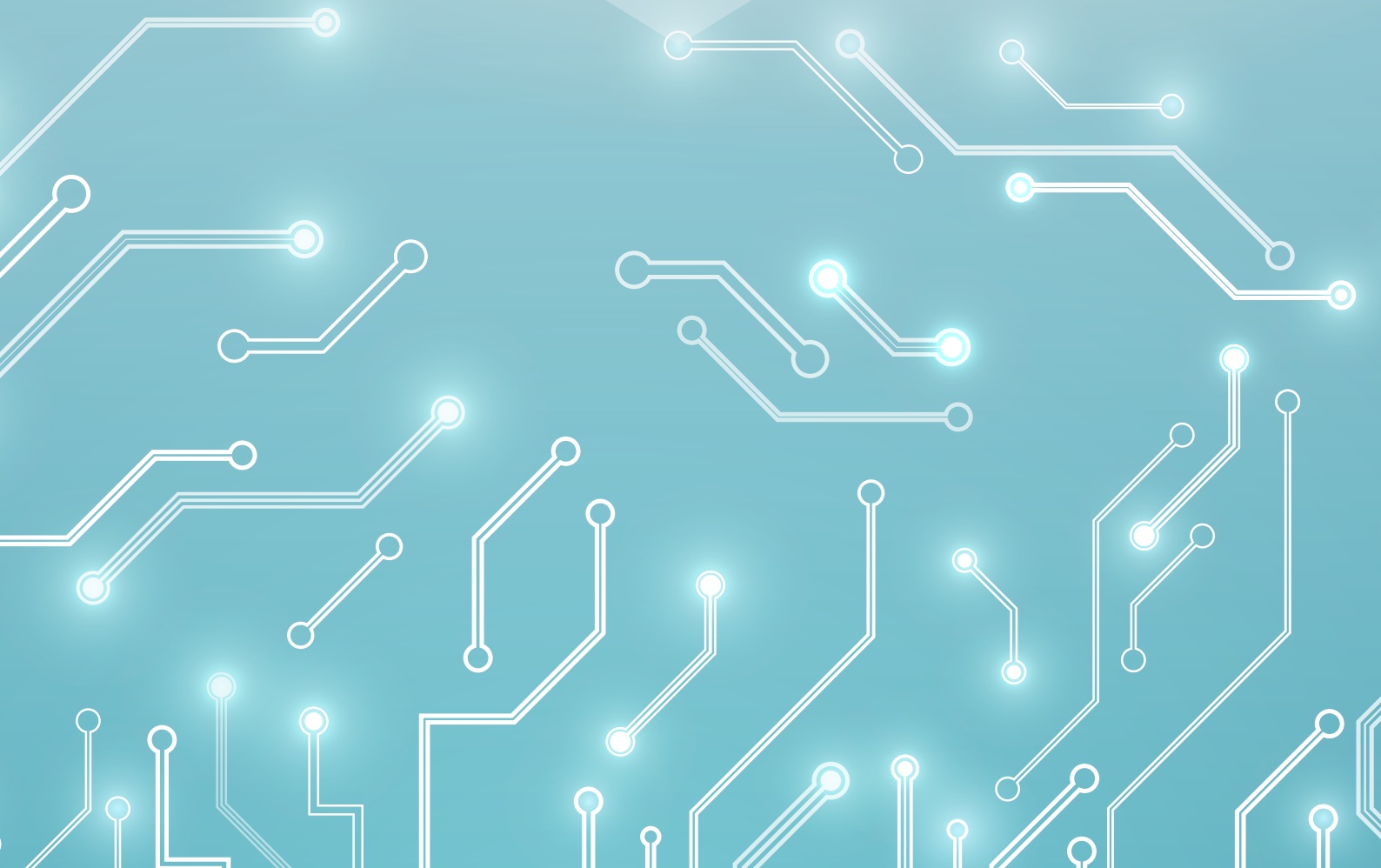


# TAIWAN SMART FACTORY

— LANDSCAPE



# Taiwan Smart Factory Landscape

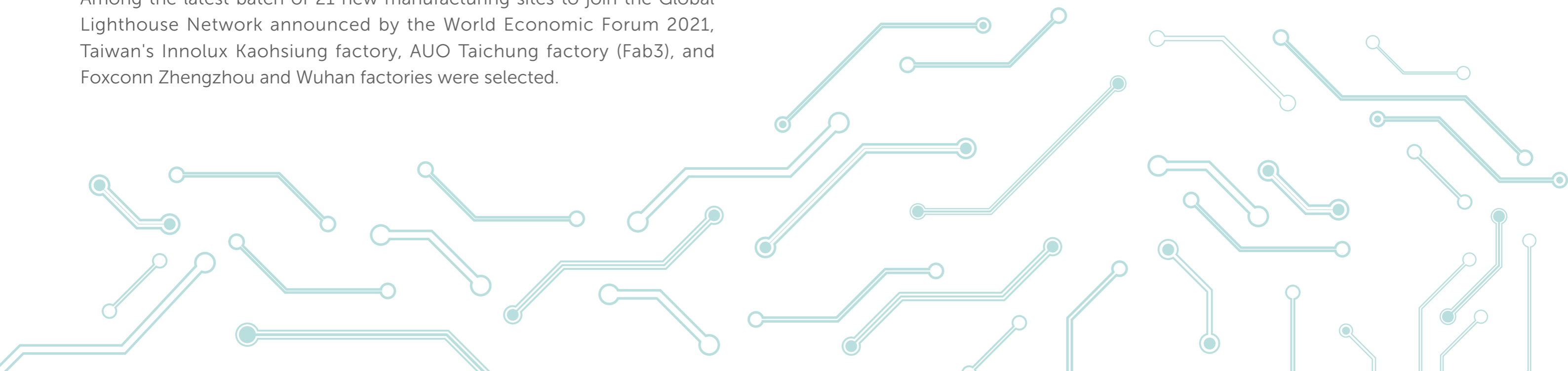
## ■ Preface

Since 2019, COVID-19 erupted in many countries. The epidemic prevention measures of many cities caused their factories to stop production. Digitalization of business operations was suddenly on the verge, with smart factories becoming the focus of investment in the manufacturing industry. Coupled with the international commitment for carbon reduction worldwide and Environmental, Social and Corporate Governance (ESG) demand for sustainable operation, corporations are vying to expand their capital in smart manufacturing. The global smart manufacturing market reached USD\$305 billion in 2021, and is expected to reach USD\$450 billion by 2025.

Taiwan's Electronic Manufacturing Services (EMS) for laptop computers, mobile phones & consumer electronics has no rival in terms of manufacturing technology, cost control, and supply chain management. After decades of research, it has integrated many smart factory solutions. Among the latest batch of 21 new manufacturing sites to join the Global Lighthouse Network announced by the World Economic Forum 2021, Taiwan's Innolux Kaohsiung factory, AUO Taichung factory (Fab3), and Foxconn Zhengzhou and Wuhan factories were selected.

Taiwan's world-famous chip manufacturer TSMC has moved further towards 3nm and smaller sizes, taking a revolutionary approach to create a smart integrated factory. It's expected to be more effective and comprehensive in improving productivity, flexibility, efficiency and product quality. There are more companies in Taiwan that have already used smart factories to upgrade their value and regard smart factories as the key to staying ahead of the competition.

In the future, it's expected that the manufacturing industry will frequent more challenges stemming from manufacturing instability due to climate change, infectious diseases, and labor shortages. It is our goal and desire that through this book we may help the international community take stock of Taiwan's smart manufacturing solution providers and that we embark together in the transformation and upgrade of manufacturing industries.



# CONTENTS

## SMART FACTORY SYSTEM INTEGRATION

ADLINK TECHNOLOGY	8	FAIR FRIEND ENTERPRISE	18
ADVANTECH	10	GALLANT PRECISION MACHINING	20
AUO DIGITECH	12	HIWIN TECHNOLOGIES	22
CHIN FONG MACHINE INDUSTRIAL	14	TONGTAI MACHINE & TOOL	24
CONTREL TECHNOLOGY	16	VICTOR TAICHUNG MACHINERY WORKS	26

## Controller & Modules

ADLINK TECHNOLOGY	30	NEXCOBOT TAIWAN	42
ADVANTECH	32	SHIHLIN ELECTRIC & ENGINEERING CORPORATION	44
AOPEN INCORPORATED	34	SYNTEC TECHNOLOGY	46
FATEK AUTOMATION CORPORATION	36	TECO ELECTRIC & MACHINERY	48
ICP DAS	38	VIGOR ELECTRIC CORPORATION	50
LNC TECHNOLOGY	40		

## Automation Mechanism

### Linear Motion Control

GMT GLOBAL	54
HIWIN TECHNOLOGIES	56
LI-MING MACHINERY	58
OME TECHNOLOGY	60
PRECISION MOTION INDUSTRIES	62
SESAME MOTOR	64
TBI MOTION TECHNOLOGY	66
TOYO AUTOMATION	68

### Fluid Control

MINDMAN INDUSTRIAL	70
SHAKO	72
TAIWAN CHELIC	74

### Motor

SHIHLIN ELECTRIC & ENGINEERING CORPORATION	76
TECO ELECTRIC & MACHINERY	78

## Smart Machining Tools

### CNC Cutting Machine

BUFFALO MACHINERY COMPANY	82
CHING HUNG MACHINERY & ELECTRIC INDUSTRIAL	84
COSEN MECHATRONICS	86
EVERISING MACHINE COMPANY	88
FACTORY AUTOMATION TECHNOLOGY	90
FAIR FRIEND ENTERPRISE	92
GOODWAY MACHINE TOOLS GROUP	94
JAINNHER MACHINE	96
JOEN LIH MACHINERY	98
KAO MING MACHINERY INDUSTRIAL	100
PALMARY MACHINERY	102
QUASER MACHINE TOOLS	104
ROUNDTOP MACHINERY INDUSTRIES	106
TONG YI MACHINERY	108
TONGTAI MACHINE & TOOL	110
VICTOR TAICHUNG MACHINERY WORKS	112
YEONG CHIN MACHINERY	114

### CNC Forming Machine

CHIN FONG MACHINE INDUSTRIAL	116
LIEN CHIEH HYDRAULIC INDUSTRIAL	118
SHIEH YIH MACHINERY INDUSTRY	120
SHUZ TUNG MACHINERY INDUSTRIAL	122
SOCO MACHINERY	124
YING HAN TECHNOLOGY	126

### Semi/LED/PCB Manufacture Equipment

CONTREL TECHNOLOGY	128
FITTECH	130
GALLANT PRECISION MACHINING	132
SHUZ TUNG MACHINERY INDUSTRIAL	134
UTECHZONE	136

### Automatic Loading System

AUTOMAC SMARTAUTO	138
CHERNG JIN TECHNOLOGY	140
FORWELL PRECISION MACHINERY	142
MITPSB TECH	144

## Smart Logistics

### Robots and Cobots

EVERMORE MACHINE	148
HIWIN TECHNOLOGIES	150
MECHAVISION	152
TECHMAN ROBOT	154

### Automatic Storage Retrieval System

CHAIN WE MACHINERY	170
IAMECH TECHNOLOGY	172
TERA AUTOTECH CORPORATION	174

### Automated Guided Vehicle

CHINA MOTOR CORPORATION	156
GALLANT PRECISION MACHINING	158
IAMECH TECHNOLOGY	160
NOVELTEK INDUSTRIAL MANUFACTURING	162
PASSION MOBILITY	164
TECO ELECTRIC & MACHINERY	166
TOPTEK AUTOMATION	168

# SMART FACTORY SYSTEM INTEGRATION





**ADLINK TECHNOLOGY INC.**  
**凌華科技股份有限公司**

<https://adlinktech.com>

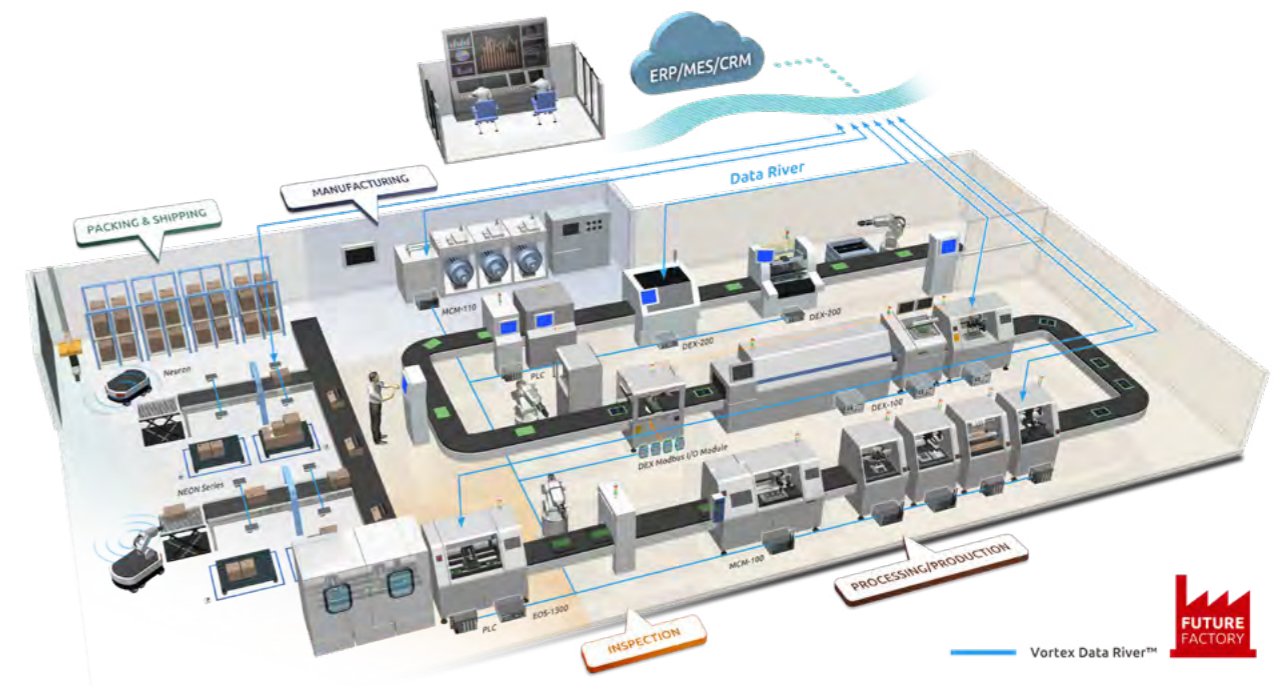
ADLINK Technology Inc. (TAIEX:6166) focuses on edge computing, Ah embedded, distributed and intelligent computing. ADLINK manufactures edge hardware and develops edge software for embedded, distributed and intelligent computing – from powering medical PCs in the intensive care unit to building the world’s first high-speed autonomous race car.

ADLINK Smart factory



ADLINK holds top-tier edge partnerships with Intel, NVIDIA, AWS and SAS, and also participates on the Intel Board of Advisors, ROS 2 Technical Steering Committee and Autoware Foundation Board. The company contributes to open source, robotics, autonomous, IoT and 5G standards initiatives across 24+ consortiums, driving innovation in manufacturing, telecommunications, healthcare, energy, defense, transportation and infotainment. For over 25 years, with 1800+ ADLINKers and 200+ partners, ADLINK enables the technologies of today and tomorrow, advancing technology and society around the world.

ADLINK Smart Manufacturing



# ADVANTECH

*Enabling an Intelligent Planet*

## ADVANTECH CO., LTD. 研華股份有限公司

<https://www.advantech.com/>

Advantech (TAIEX:2395) is an avid user and provider of Industry 4.0 solutions. The company provides value-added products, solutions, and services that help customers to implement smart factory processes and experience the benefits of efficiency from Industry 4.0.

Advantech has found that iFactory SRP (Solution Ready Package) that combines hardware and software into integrated industrial application is a step-wise approach to realizing intelligent factory. Accordingly, it actively seeks co-creation partnerships to construct the Industry 4.0 ecosystem and strengthen the influence of domain focused applications. Advantech enters the next IoT era by adopting the co-creation model and global deployment.

Advantech is working with partners to co-create Industrial IoT ecosystems that accelerate the development of Industry 4.0. By working together, the company is committed to the performance and success of their customers in the future of Industry 4.0.



# AUO DIGITECH TAIWAN INC.

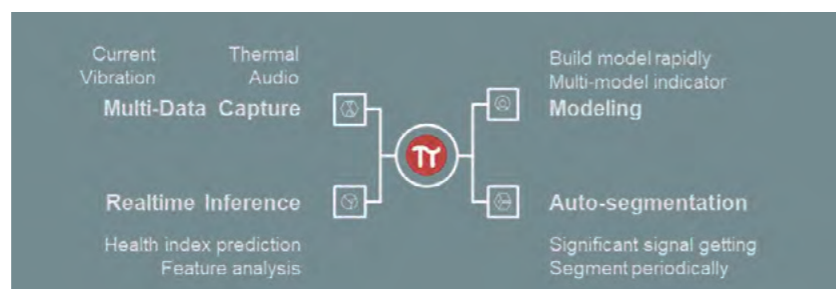
## 友達數位科技服務股份有限公司

AUO DigiTech <https://www.auo.com/en-global>

AUO DigiTech is one of the world's leading providers of Optoelectronic Solutions. It offers a full range of display products (> 1000 models & 51 sizes of display) with industry –leading display technology.

In the age of digital transformation for smart solutions, AUO integrates software, hardware, cloud, and service platforms to enter the diverse application market. Smart solutions include Smart Retail, Smart Medical Care, Smart Transportation, Smart Education & Smart Manufacturing.

### DrPi



AUO DigiTech (ADT) is a wholly-owned subsidiary of AUO. It adopts AI in all aspects of manufacturing to assist customers in their process of digital transformation. Currently, ADT's expertise is in ASRS + WMS system, EPMS, Digital Trainer, Dr Pi (AI-MCD system), R2R AOI, and Polling Device system.

ADT believes that it has the capabilities & experience to add value in customer's goods, through co-working, innovation and contributing in Smart Manufacturing for customers to improve productivity and profitability in their business.

### Roll-to-Roll AOI System





CHIN FONG MACHINE INDUSTRIAL  
CO., LTD.

金豐機器工業股份有限公司

<https://www.chinfong.com/en/>

Since 1948, Chin Fong Machine has grown into the largest manufacturer of mechanical power presses in Taiwan. In recent years, it has begun promoting digital transformation, integrating stamping equipment with the Internet of Things (IoT), and introducing intelligent forming solutions based on stamping and forging experience.

Chin Fong is the leading manufacturer of mechanical power presses in Taiwan and one of the five largest in the world. It has adopted a new business model in recent years, applying advanced IT technologies such as IoT and AI as the framework to integrate customers' operations and management. Based on the latest intelligent forming management system - iForming, it is able to assist customers in their transformation from traditional manufacturing to smart manufacturing and towards digital transformation.

### Fully Automatic Tandem Line



In its 70+ years of history, Chin Fong has continued to provide customers in various stamping fields with diversified, reliable, and high-quality stamping equipment. In the past 25 years, it has achieved sales of more than 60,000 units of its equipment. It has distributors in major cities all over the world that can provide after-sales service.

### Fully Automatic Tandem Line







東捷科技股份有限公司  
Control Technology Co., Ltd.

## CONTROL TECHNOLOGY CO., LTD. 東捷科技股份有限公司

<https://www.control.com.tw/>

Control Technology is the equipment leader in FPD and semiconductors. It's also been dedicated to laser equipment repair with 23-years of experience. Products include: Panel and Semiconductor automation product lines, Optical inspection equipment, and Laser application equipment. It is also able to provide factory turnkey solutions of TFT-LCD manufacturing starting from array, cell, to LCM process. Furthermore, a smart factory could be built as per customers' request.

Control intends to make AI function a primary focus of its product development in response to the smart manufacturing trend e.g., defects in panels could be identified automatically and the repair path could then be planned instantly. Furthermore, since Micro LED is emerging as the next-generation in displays, the company has been involved in the Mini/Micro LED display market and has successfully debuted its equipment for the market. The custom equipment is developed successfully for rollable Mini LED emissive display featuring active matrix (AM) driving technology for the customer. Control also provides other diverse equipment.





**FAIR FRIEND ENTERPRISE CO., LTD.**  
**友嘉實業股份有限公司**

<https://www.feeler.com/>

Fair Friend Group (FFG), is the world's third-largest machine tool group. The brand name FEELER was established for overseas marketing. It is a machine tool equipment manufacturer. They provide turning, milling, 5-axis, gantry type, horizontal boring machines, automation production line, turnkey.

FEELER has effectively integrated R&D resources and enhanced product competitiveness after acquiring major machine tool manufacturers in Europe and the U.S. The introduction of high-end 5-axis machines has won the favor and affirmation from customers. At present, FEELER has an R&D team of 60 people and more than 100 technology patents and awards from many countries.

Their future operation goal is focused on assisting customers to transform into smart factories. Semiconductor, automotive and electronics production lines are moving towards "Lights out" manufacturing. FEELER proposes a cloud situation room planning service that allows customers to monitor their factories 24 hours a day from the cloud. This includes machines' information, utilization rate, predictive analysis, etc., providing customers with real-time status of the factory at any time.



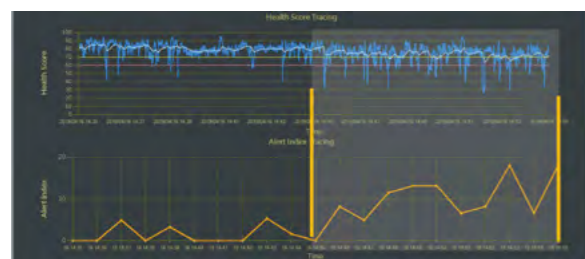
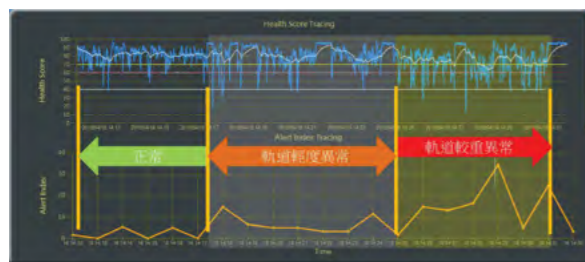
# GPM 均豪精密

GALLANT PRECISION MACHINING CO., LTD.  
均豪精密工業股份有限公司

<http://www.gpmcorp.com.tw/en-global>

Gallant Precision Machining Co., Ltd. (GPM) (TAIEX:5443) specializes in providing solutions for smart manufacturing, advanced process equipment for the semiconductor industry, and process equipment for the display industry. GPM has a comprehensive range of smart manufacturing solutions, with customers and service locations in Taiwan, North America, Southeast Asia, China, etc.

## Intelligent Diagnosis & Maintenance System



GPM is committed to providing first-rate technology, products and service to help customers innovate processes and enhance core competitiveness. The company's main business products and services are Semiconductor Industry Process & Detection Equipment, which it has independent key technology of IC pick & place as well as molding. It provides one-stop service for design, manufacturing, assembly and testing. For FPD Industry Process & Inspection Equipment, GPM focused on developing leading technology for new processes and equipment. In Solutions for Smart Manufacturing, GPM integrates nearly 43 years of experience in promoting automation systems and intelligent manufacturing in the display, semiconductor, and solar power industries. GPM's smart transportation system has system integration to information system, field equipment status, process characteristics and more.

## Intelligent Diagnosis & Maintenance System



# HIWIN®

HIWIN TECHNOLOGIES CORP.

上銀科技股份有限公司

<https://www.hiwin.tw/>

HIWIN's industrial robots include SCARA, 6 Axis, Delta can integrate with HIWIN's electric gripper, Rotary Joint and ballscrew, ball spline, linear guideway and Datorker Strain Wave Gear, Datorker Strain Wave Gear System as total solution to help customer set up the intelligent factory. Customer's process automation and productivity can be upgraded and create more value added in the manufacturing processes.

HIWIN Wafer Robot been the best partner for semiconductor manufacturing processes for wafer handling. Offer customer high precision and reliability.

HIWIN i4.0BS (Intelligent 4.0 Ball screw) is the first ball screw in the world that can be mass produced to achieve smart manufacturing for Industry 4.0. With patented multi-function sensors and expert algorithm, users can monitor its service life, heat deformation, vibration, and lubrication. HIWIN developed a customized App to remote monitor conditions of multiple machines, help users to plan production and pre-schedule maintenance, and improve productivity by preventing machines' unexpected stop.

HIWIN commits to intelligent automation and offers various types of robots, including wafer, 6-axis, Delta, SCARA and medical robots. They help to reduce human labor, including people working in hazardous environments, thus improving human life.

**INDUSTRIE 4.0 Best Partner**

Wafer Robot

Delta Robot

SCARA Robot

Articulated Robot

DATORKER® Strain Wave Gear

DATORKER® Strain Wave Gear System

Ball Spline

Electric Gripper X Series

Integrated Electric Gripper S Series

Electric Rotary Joint ERJ Series



**TONGTAI MACHINE & TOOL CO., LTD.**  
**東台精機股份有限公司**

<https://www.tongtai.com.tw/en/>

Tongtai (TAIEX:4526) is a leading Taiwanese machine tool manufacturer and well-known for its Turnkey Solutions. The product lines are not limited to multi-tasking turning centers and 5-axis machining centers, but also special purpose machines, CNC lathes, machining centers, and PCB equipment. Tongtai has also developed ultrasonic assisted machining, laser machining and metal additive manufacturing.

The foundation of Tongtai consists of technology, which has been granted more than 200 patents globally. In addition to selling different types of machine tools, the company offers various choices in functional modules and customized services. With the benefits of technological integration in software, automation, intelligence, and trial machining, Tongtai is able to provide the most appropriate Turnkey solutions to worldwide customers. Furthermore, Tongtai has been certified as an automation service provider by the Taiwanese Industrial Development Bureau (IDB), Ministry of Economic Affairs.

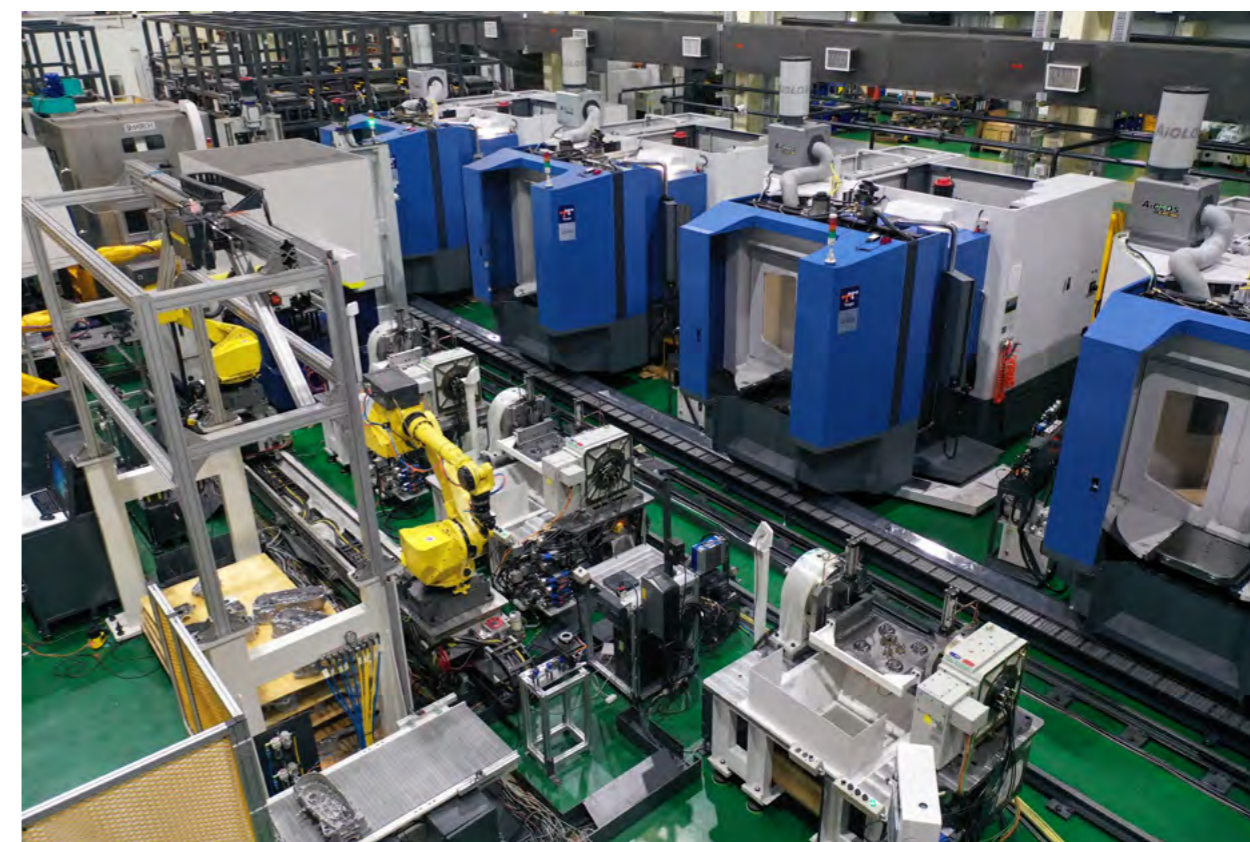
### Single Machine



Tongtai has more than 20 offices worldwide and agents in more than 60 countries. Moreover, Tongtai has established Tongtai Technological Application Center (T-TAC) to provide direct technological services in Taiwan, China, Thailand, Malaysia, Turkey, and Switzerland.

Tongtai offers machining solutions to customers worldwide, and in diverse industries, including automotive aerospace, and the growing industries of EV, 5G, and Semiconductor. In the era of intelligent manufacturing, Tongtai can provide solutions including single machines or product lines.

### Production Line





VICTOR TAICHUNG  
MACHINERY WORKS CO., LTD.  
台中精機股份有限公司

<https://www.victortaichung.com/>

Victor Taichung Machinery is one of Taiwan's biggest machine tool manufacturers. It specializes in machining centers, lathes and plastic injection molding machines. Victor Taichung's powerful vertical integration capabilities of casting, sheet metal working, machining and assembly differentiate it from other precision machinery makers.

Victor Smart Production(VSP) Lines



Victor Taichung is committed to incorporating IT into its products and it has been doing so for over a decade. Now Victor can go further with the use of the Victor Smart Box (VSB), a platform that helps the client to carry out real-time machine monitoring, utilization rate management, tool life management and more.

Industry 4.0 has become a hot topic in global manufacturing. The company has built a brand-new smart factory with eight Victor Smart Production (VSP) lines, four smart machining lines (VSM), replanning the manufacturing process. Furthermore, Victor is introducing a smart logistics system together with Formosa Heavy Industries and China Motor's GreenTrans AGV, integrating ERP and MES systems.

Victor Smart Production(VSP) Lines



# CONTROLLER & MODULES



**ADLINK TECHNOLOGY INC.**  
**凌華科技股份有限公司**

<https://adlinktech.com>

ADLINK Technology Inc. (TAIEX:6166) focuses on edge computing, Ah embedded, distributed and intelligent computing. ADLINK manufactures edge hardware and develops edge software for embedded, distributed and intelligent computing – from powering medical PCs in the intensive care unit to building the world’s first high-speed autonomous race car.

ADLINK ROScube-I ROS 2 Controller



ADLINK MCM Series



AI Smart Camera  
NEON-2000-JNX



ADLINK holds top-tier edge partnerships with Intel, NVIDIA, AWS and SAS, and also participates on the Intel Board of Advisors, ROS 2 Technical Steering Committee and Autoware Foundation Board. The company contributes to open source, robotics, autonomous, IoT and 5G standards initiatives across 24+ consortiums, driving innovation in manufacturing, telecommunications, healthcare, energy, defense, transportation and infotainment. For over 25 years, with 1800+ ADLINKers and 200+ partners, ADLINK enables the technologies of today and tomorrow, advancing technology and society around the world.



**ADVANTECH**

*Enabling an Intelligent Planet*

**ADVANTECH CO., LTD.**  
**研華股份有限公司**

<https://www.advantech.com/>

Advantech (TAIEX:2395) is an avid user and provider of Industry 4.0 solutions. The company provides value-added products, solutions, and services that help customers to implement smart factory processes and experience the benefits of efficiency from Industry 4.0.

Advantech has found that iFactory SRP (Solution Ready Package) that combines hardware and software into integrated industrial application is a step-wise approach to realizing intelligent factory. Accordingly, it actively seeks co-creation partnerships to construct the Industry 4.0 ecosystem and strengthen the influence of domain focused applications. Advantech enters the next IoT era by adopting the co-creation model and global deployment.

Advantech is working with partners to co-create Industrial IoT ecosystems that accelerate the development of Industry 4.0. By working together, the company is committed to the performance and success of their customers in the future of Industry 4.0.

■ EtherNet/IP Modules ADAM-6117EI



■ Compact Modularized Systems MIC-7700



■ Industrial Human Machine Interface WEBOP-2070T





**AOPEN INCORPORATED**  
**建基股份有限公司**

Bright Ideas Connected [https://www.aopen.com/US\\_en/index.html](https://www.aopen.com/US_en/index.html)

AOPEN (TAIEX:3046) is a company from Acer Group. The company has 25 years of experience and it offers best-in-class, cross-platform, commercial-grade, smart vision solutions in cloud-based digital signage and applied computing in smart factory applications.

The company's continued advancements have led to unique and custom solutions deployed globally. AOPEN is actively developing solutions in response to current and future market demands in applied computing and smart vision products, empowering AIoT and machine learning applications in a variety of smart manufacturing, utilizing analytical data to increase revenue. With its smart manufacturing and artificial intelligence of things (AIoT) solutions, AOPEN is driving rapid changes to the way people connect and engage.

Industrial media players DEX5750



With input from its partners, the company manufactures products that drive personalized solutions. AOPEN commercial-grade products have been certified in Japan, South Korea, India, Thailand, Brazil, among other countries. AOPEN continues to be a key partner in digital transformation for enterprise brands, anticipating market demand for cutting-edge industrial and commercial applications.

Industrial media players DEX5750



# FATEK®

FATEK AUTOMATION CORPORATION  
永宏電機股份有限公司

<https://www.fatek.com>

FATEK Automation Corp. was established in 1992 in Taiwan by a group of engineers engaged in PLC design and development. Since its establishment, FATEK has strived for R&D in order to provide high-quality, high-function and user-friendly automatic control products. The product line focuses on PLC, Motion, HMI, SCADA, IoT, Servo and Power supply, etc.

## FATEK IoT Solution



FATEK has sold more than 5 million PLC and is a trusted partner of many top companies in different industries with applications in High-Speed Rail (HSR), semiconductor fabrication plant, press machine, environmental monitoring, etc.

The company has never been satisfied with just being the top-rated manufacturer of PLC and HMI. Nowadays, it has formally gained a foothold in the IoT application solution, and stepped up to develop high end motion control system and smart manufacturing and related solutions. In the future, in addition to striving for R&D and expanding to more comprehensive industrial products and solutions, FATEK is determined to have an indispensable key leading role in the industrial control field.

## FBs Series PLC



## P Series HMI





ICP DAS CO., LTD.  
泓格科技股份有限公司

<https://www.icpdas.com/>

ICP DAS strives for advanced remote I/O controllers, distributed I/O modules, and I/O data acquisition boards. To provide a total industrial automation solution and a complete after-sales service, ICP DAS enthusiastically endeavors to develop a series of programmable automation controllers, web-related products and motion-control systems.

ICP DAS offers an efficient and comprehensive automation solution for the application of industrial control, real-time data, warning system of earthquakes and hydrology, power-monitoring, and more.

IIoT Edge Controller WISE-5231M-4GE



No-touch Infrared Sensor Switch ACS-20W-MRTU



DL-1023 Air Quality Box



The company services different industries, including factory automation, semiconductor, LCD panel, and petrochemical industries for monitoring equipment. More applications that use ICP DAS products include on-line pollution-monitoring systems, battery recharging systems, piers monitoring, factory monitoring, well-known automobiles and jets companies, etc.

To maintain the position of the technology-leading platform provider, ICP DAS invests heavily in R&D. It has over 110 software and hardware engineers and innovative products to upgrade the development of the automation industry, and offers comprehensive services in U.S., Europe, China, etc.



Enable intelligent machines

## LNC TECHNOLOGY CO., LTD. 寶元數控股份有限公司

<https://www.lnc.com.tw/en-us/>

LNC Technology dedicates itself to developing and manufacturing of control systems and related products. Product range includes high-speed and high-precision controllers of milling machine, turning machine, injection molding machine, gantry robot, automation control system, and much more. Products are applied to a wide variety of processing needs in modern factories, such as molds processing, cutting, stamping, grinding, injection to robot operation, etc.

### High Precision Lathe Controller - T6800



### Articulated Robot Controller R8800



LNC is continuously improving the core technology for control systems and it also invests a large amount of resources on development of EtherCAT related products and fields. Besides controllers, LNC has also launched its own brand EtherCAT servo motor, EtherServo, spindle convertor, EtherPower, EtherCAT expansion module, etc. In response to the development trend, LNC also launched its cloud platform, LNC SCADA and AI related products, to provide customers with one-stop shop and integrated total solution for smart manufacturing.

LNC has invested heavily on research in order to keep the company competitive. Since 2008, it has applied for multiple patents every year. It has accumulated more than 130 patents and there are still multiple patent applications in progress. LNC sales channels and markets are mainly in Taiwan and Mainland China, Southeast Asia, Central Asia, South America and Europe.

### AOI Module AI-2000



# nexCOBOT

*Open Robots & Machines*

NEXCOBOT TAIWAN CO., LTD.

創博股份有限公司

<https://www.nexcobot.com/>

NexCOBOT is one of the leading robotics and machinery solutions provider in a diverse range of industries. These include motion control, CNC controller and gateway developed with state-of-the-art technologies, and the flexibility and expandability of diverse industrial robots to operate collaboratively.

NexCOBOT also provides quality services, such as customization, product training, direct technical support, and after-sales service. NexCOBOT continues to enhance their innovation capacity with its global R&D team actively working to receive more patents. For instance, the company leads by using SRB series gateway to connect different robotic arm communications and integrate into smart factory system - as evidenced by Reader's Choice Award of Automation Inside.

## Machine Automation GMC-211F



## EtherCAT I/O Module NEIO-B1812



## Industrial Robot Controller GRC-200C



NexCOBOT's core competencies include building a strong world-class service network by providing customized service, global logistics, local access, and real-time support. It operates from its subsidiaries in Taiwan, the United States, China, Japan, to Italy.



SHIHLIN ELECTRIC & ENGINEERING CORPORATION  
士林電機股份有限公司

<https://www.seec.com.tw>

Established in 1955, SHIHLIN ELECTRIC & ENGINEERING CORPORATION (SEEC) (TAIEX:1503) has expanded its operations from basic construction to public works. From the development of electrical power resources to assisting with industry upgrade. The company has been persistent in its firm belief of "improvement over time" in running its operations and in corporate development. As such, the company plays a pivotal role in Taiwan's domestic electrical industry.

■ Magnetic Contactor & Miniature Circuit Breaker



SEEC has been a leader in the domestic market with advanced technology in heavy electrical systems, electrical equipment, machinery and automation. In the overseas market, the company has also performed well, with sustained growth. The company has engaged in joint ventures with famous international firms in ODM and OEM production. This has strengthened the R&D capacity of the company, manufacturing to international standards in terms of specifications and technological know-how.

The involvement in digital image channels and optoelectronic and system integration symbolizes the transformation and diversification of the company and its effort in developing the international market.

■ Servo Motor & Drive



■ AC Drives (VFD)





SYNTEC TECHNOLOGY CO., LTD.  
新代科技股份有限公司

<https://www.syntecclub.com/my/>

SYNTEC TECHNOLOGY CO., LTD was established in 1995. It manufactures PC-based CNC controllers. Syntec has contributed in the field of machine tool industry with 100% owned controller technologies, cultivated to be innovative in both hardware and software. The company has constantly invested to expand in Taiwanese & Chinese markets for many years. It has become one of the most influential and professional brands of PC-based controllers in Asia.

Next Generation Controller



Focusing on machine tool industry, Syntec's business covers a variety of controller products in the fields of lathe, milling, and dedicated machines. In addition to its well-known reputation in machine tool controllers, Syntec extended its businesses to high-end spindle servo solutions, linear motors, direct drive motors, robots and automation products to meet the demands in the automation industry.

Recently, under the global trend of intelligent automation, "LEANTEC Intelligence", a subsidiary of SYNTEC group, was born. LEANTEC specializes in robotic arms and cloud service. By virtual and physical integration, LEANTEC provides complete factory automation solutions.

CNC-Robot Integration







TECO ELECTRIC & MACHINERY CO., LTD.  
東元電機股份有限公司

<https://www.teco.com.tw/en>

Founded in 1956 for motor production, TECO Electric & Machinery Co., Ltd. (TAIEX:1504) has evolved to a major business group. It spans from heavy electric equipment, home appliances, information technology, and more. Its business scope covers over 100 cities in more than 40 countries. In recent years, the conglomerate developed and expanded to renewable energy industries such as EV powertrain system, offshore wind power business, and solar power energy storage projects.

AP Programmable Logic Controller



TECO develops, manufactures, and services sophisticated value-added electrification solutions. It focuses on bringing the latest technologies for motors, drives, gears as well as engineered system solutions.

TECO Automation and Intelligent System Products are capable of offering forward-looking automated industrial application services. It includes servo-driving technology, PLC and HMI human-machine interface, and smart solutions, which can meet the needs of flexibility, energy saving, and high performance of production lines.

JSDL2 AC Servo Driver



JSDG2S AC Servo Driver



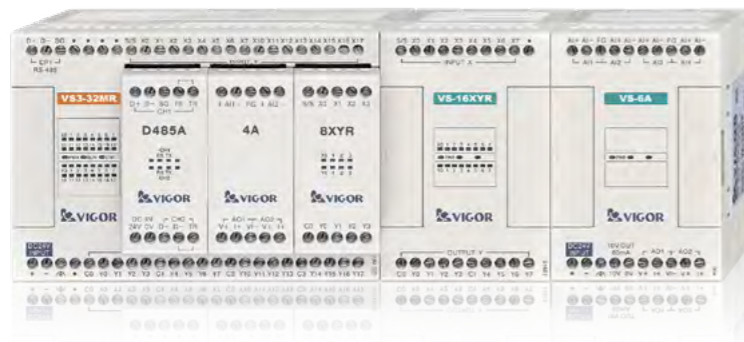
**VIGOR**  
PROGRAMMABLE CONTROLLER  
VIGOR ELECTRIC CORPORATION  
豐煒科技企業股份有限公司

<https://www.vigorplc.com/en/>

Vigor Electric Corp. is a professional manufacturer of PLC (Programmable Logic Controller) in Taiwan. It was established in 1995, and has been in the industry for more than 25 years. The company specializes in R&D and manufacturing of PLC and has extensive experience in the field. It has mature product technology with advantages including stable quality, high-reliability, high-flexibility, and competitive pricing.

Although PLC is a small portion in the whole automation system, it is the "soul" in conducting the whole system. PLC with high-reliability and high-flexibility helps customers to reach ultimate automation system design as well as cost-saving for system maintenance.

VS Series PLC Controller

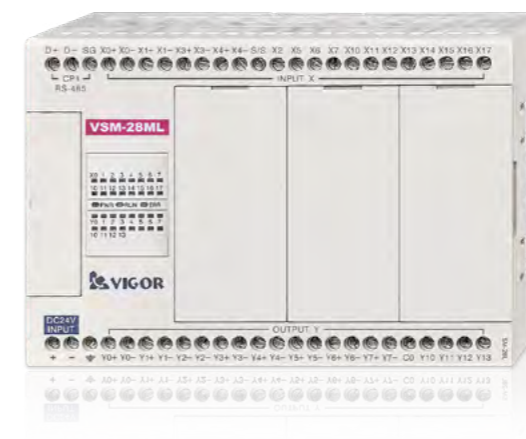


The programming tool for Vigor PLC is Ladder Master S, it is sort of ladder diagram, easy to edit and easy for programming.

The design of VS series consists of the main unit and optional modules / cards, which provides high flexibility to customers' requirements.

Customers can choose what they need exactly from the optional modules/cards, and do not need to pay additional cost for those resources that they don't need.

VSM-28ML PLC Controller



Highly Reliably Connector for efficient installation



# AUTOMATION MECHANISM

- Linear Motion Control
- Fluid Control
- Motor



GMT GLOBAL INC.  
高明鐵企業股份有限公司

GMT GLOBAL INC. <https://www.gmt.tw/>

GMT Global Inc. (TAIEX:4573) established in 1994, and headquarter is based in Taiwan. In order to provide service for customers efficiently, they have subsidiaries which is to operate the business in China, Germany. GMT is dedicating to manufacture Linear Motion Components, and focusing on the idea of "Striving towards intelligent automation to increase convenience in the industry" to innovate their products. GMT promotes their products all over the world that hope to help the manufacturing industry establish intelligent factories and gradually move towards Industry 4.0.

DC Motor Driver K-SERVO



GMT provides products for various industries, including automobile, semiconductor, photonic, green energy, and pharmaceutical, and also supplies automation technology and technical solutions to more than 34 countries. In 2021, GMT had 83 patents and strengthened R&D department in charge of mechanism, electric control, and mechatronics. GMT products responds to their philosophy, which is to provide the most convenient motorizing solutions, the most innovative customized services, and the most reliable products.

Electric Cylinder-Slider Type GERC



Electric Cylinder-Slider Type GESC



# HIWIN®

HIWIN TECHNOLOGIES CORP.  
上銀科技股份有限公司

HIWIN has comprehensive mechatronic products and solution for customer to implement automation and motion control in the manufacturing processes. HIWIN's ballscrew, linear guideway, ball spline, and the module product DRA integrates DATORKER Strain Wave Gear, cross roller bearing with servo motor offers customer total solution in factory automation.

The single axis robot integrates with HIWIN Mikrosystem's servo motor and drive, is a user-friendly total solution product. Customer just install and enjoy the benefit of high accuracy, plug and play concept to implement automation and achieve smart manufacturing in the factory.

## Single-Axis Robot



## DATORKER Strain Wave Gear



## Bearing



HIWIN i4.0BS (Intelligent 4.0 Ball screw) is the first ball screw in the world that can be mass produced to achieve smart manufacturing for Industry 4.0. With patented multi-function sensors and expert algorithm, users can monitor its service life, heat deformation, vibration, and lubrication. HIWIN developed a customized App to remote monitor conditions of multiple machines, help users to plan production and pre-schedule maintenance, and improve productivity by preventing machines' unexpected stop.

HIWIN commits to intelligent automation and offers various types of robots, including wafer, 6-axis, Delta, SCARA and medical robots. They help to reduce human labor, including people working in hazardous environments, thus improving human life.

## i4.0BS \_ i4.0GW



## Ball Spline



## Ballscrew



## Linear Guideway





LI-MING MACHINERY  
利茗機械股份有限公司

<http://www.li-ming.com/english/>

LI-MING Machinery Co., Ltd. is a specialist in design, manufacturing of a wide range of high-tech speed reduction motor and helical gear reducers, worm gear reducers and planetary gear reducers. In recent years, to meet customers' requirements of quality and price, it has dedicated itself to constantly upgrading the performance of gear reducers, maximizing efficiency, and providing the most comprehensive technical support.

ROBONICDRIVE | CYKODRIVE



LI-MING designs and manufactures: Helical Gear Reducers, Bevel Gear Reducers, Worm Reducers, Planetary Reducers, Cycloid Gear (RV) Reducers, Harmonic Reducers, Hypoid Gear Reducers, & Customized Reducers.

LIMING's team background is in the field of high-tech. Under the company's policy of "Quality Priority; Customer Satisfaction" and "Intelligence; Sincerity; Honesty", the company's enterprise culture is based on practicality, constantly learning advanced management systems and commitment to excellence.

HYPOID Reducer



SERVOBOX





**OME TECHNOLOGY CO., LTD.**  
**精浚科技股份有限公司**

<https://www.ome.com.tw/>

Founded in 2004, OME Technology provides over 1,400 different product items of linear motion components. Apart from producing linear guide transmission, it also develops biotechnology products and micro nano automatic systems. It provides customers with customized opto-mechatronics integration services.

STAF Linear Motion



OME's main products include: Linear Motion Components, Liquid Handling System, Piezo Stage, and Atomic Force Microscope. OME's linear transmission parts have received many patents and have certificates including: ISO9001, ISO13485, and GMP.

The company has 1 mechanical lab and 2 plants located in Taiwan, and offers its products and services to over 250 worldwide customers, including premium brands. Through integration and customization, OME aims to fulfill its customers needs, and is going to building a smart factory for high-efficiency supply chain and merges the 2 plants as the main operation center.

OME Micro Nano Piezo Stage



OME Liquid Handling System





**PRECISION MOTION INDUSTRIES, INC.**  
**銀泰科技股份有限公司**

<http://www.pmi-amt.com/en/>

PMI GROUP was established in 1990. It's highly involved in manufacturing of ball screws, linear guideway, ball spline, actuator and cross roller bearing. Its products are mainly applied to Machine Tools, Electric Discharging Machines, Cutting Wire Machines, Plastic Injection Machines, Semiconductor Equipment, and more.

■ Cross Roller Bearing



■ Spline Series



Some key technologies include its "Cross Roller Bearing" and "Cooling Nut System for Ball Screws". The "Cross Roller Bearing" are compact bearing with their rollers alternately crossed in a 90°v groove to each other between inner and outer rings.

This design allows just one bearing to receive loads in all directions with low deformation and extending its service life. The "Cooling Nut System for Ball Screws", by controlling the temperature rising from ball screws, it reduces metallic deformations caused by heat and boosts the machine's axial motion velocity and accuracy.

Over the past 27 years, PMI has sold numerous quality precision components worldwide.

■ Linear Motion Systems







SESAME MOTOR CORP.  
世協電機股份有限公司

<https://www.sesamemotor.com/en/>

Sesame Motor has 30 years of professional motor and gearbox manufacturing in the power transmission industry. "Sesame" offers premium performance planetary gearboxes, spiral bevel gearboxes, standard AC motors, gear motors, speed reducers and customized powertrain products. They are used in a variety of industries, including machine tools, industrial robots, semiconductor, aircraft, medical, green energy, food and many other sophisticated automation equipment.

AC Induction Motors & Gear Motors



Sesame Motor obtained CE, CCC, UL, ISO9001 and ISO14001 certification and honorary awards. All Sesame products are 100% Made in Taiwan, including raw materials, design, machining and assembly, to offer the best solutions.

Sesame Motor is moving forward to globalization based on spirit of "customer satisfaction, priority service" philosophy, providing quality power transmission products and components. Entering the era of Industry 4.0, the company would like to make contributions to precision automation in various fields. "SESAME" with high-local market share, in addition has a branch office in Shanghai, and agents in the U.S., Germany, Denmark, UK, Turkey, Russia, Japan, and many other countries.

Planetary Gearboxes



# TBI MOTION

TBI MOTION TECHNOLOGY CO., LTD.  
全球傳動科技股份有限公司

<https://www.tbimotion.com.tw/>

TBI MOTION TECHNOLOGY CO., LTD. (TAIEX:4540) as a specialized manufacturer in Linear Motion Industry in Taiwan, possesses complete product line with MIT (Made in Taiwan) quality. Main products include: Ball Screw, Linear Guide, Rotary series, Ball Spline, Single Axis Actuator, Linear Ball Bearing, Coupling, Support Unit of Ball Screw, etc.

- Linear Guide
- Ball Screw
- Ball Spline
- Rotary Series
- Single Axis Actuator



TBI MOTION possesses critical core technology and concentrates on product research and innovative design. Its products are under patent design with ISO 9001:2015, ISO 14001:2015, ISO45001:2018 certification. Distributors have been established all over the world. The range of applications of their products include: Automation Industry, Robot Industry, Semiconductor Industry, Industrial Machinery, Medical Equipment, Green Energy, Machine Tool and Automated Storage & Retrieval System.

With professional technical support and industry analysis, TBI fulfills its clients' demand and attain differentiation.



**TOYO** TOYO AUTOMATION CO., LTD.  
東佑達自動化科技股份有限公司  
FA & ROBOT <http://www.toyorobot.com/>

TOYO has kept the core concept of "continuous innovation". Its full range of products are compatible with different industries when introducing automation. In order to improve production performance & increase functionality, a large number of parts are made in-house, allowing customers to have the right product with high value. TOYO is the first brand in Taiwan's Single-axis and Cartesian Robots. In addition to electric grippers, the full range of product lines also includes: single-axis actuator modules, electric cylinders, desktop robots, AGV systems, and more.

Linear Motot Robots



Electric Actuator



Servo Cylinder



TOYO has a diverse product line and all the products can be used by various industries. It has been used in PC, LCD, PCB, Semiconductor, Automotive, etc. TOYO has obtained ISO 9001, OHSAS 18001:2007, ISO 14001, and other related international certifications.

TOYO exports Taiwan-made products to over 15 advanced countries, including Japan, U.S., Italy, Korea, etc. In order to provide rapid service to customers, the company has set-up production facilities in Taiwan, China, and Japan. It also cooperates with agents in more than nine countries, like the U.S., Europe and S.E Asia.



MINDMAN INDUSTRIAL CO., LTD.  
金器工業股份有限公司

<https://www.mindman.com.tw/>

Mindman Industrial Co., Ltd. was established in 1979 with a destination to provide high-quality automation components for a wide variety of industries. During the past 40 years, Mindman has devoted itself to the expansion of the company's product range. It is proud to possess a diversified product lineup including: solenoid valves, air treatment units, pneumatic cylinders, electric actuators and all different types of fluid power accessories.

The company believes that fast delivery of automation components is the key to success in the market. Through complete vertical integration of all manufacturing processes and automated warehouse, they are confident to achieve on-time delivery.

■ Air Treatment Unit



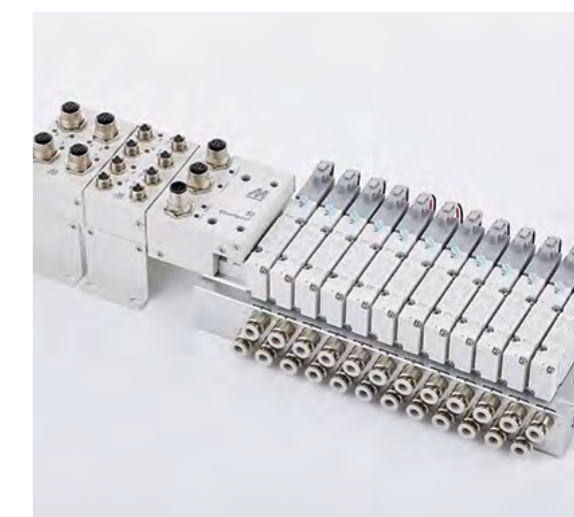
To keep quality high during the whole production process, it implements strict quality-control standards. Mindman thoroughly controls the process via standard operation procedure (SOP), statistical process control system (SPC) and total productive management (TPM). Most important of all, Mindman commits to providing the products with 100% inspection after assembly.

Currently, Mindman products are exported to more than 90 countries around the world. The company has devoted itself to building relationships with customers worldwide and provides them with strong support: e.g., online 3D drawing, inventory check and promotional programs, etc. In the vast automation market, Mindman will spare no effort in establishing itself as a world-class premium automation components supplier.

■ Air Cylinder



■ Solenoid Valve





SHAKO CO., LTD.  
新恭股份有限公司

<https://www.shako.com.tw/>

SHAKO CO., LTD. was founded in 1980, and is a leading manufacturer of pneumatic components. The company's product range includes: FRL combination, Solenoid valves, Pneumatic valves, Pneumatic cylinders, Mechanical valves, Pneumatic press and other relevant valves and accessories. All product series have been widely applied to the industrial fields of automation equipment, automotive assembly, medical and electronic machinery.

■ F.R.L Combination UCFR/L



From materials procurement to the finished product and assembly, the advanced lathes and milling machinery are fully automated and controlled by computers to improve product quality, increase production and delivery efficiency.

With excellent testing equipment, SHAKO was awarded in 2007 national level 2 laboratory certification in the pressure resistance and leak test in accordance with ISO / IEC 17025:2005 standard. In addition to full implementation of the ISO-9001 quality management systems, the most advanced precision equipment are used for product inspection such as: digital pressure meter, computer applications, air leak tester, pressure resistance tester and flow tester.

■ Pneumatic Solenoid Valve VM321



■ Compact Slide Cylinder MCFR



# CHELIC®

TAIWAN CHELIC CO., LTD.  
台灣氣立股份有限公司

<https://www.chelic.com/>

Chelic(TAIEX:4555) is one of the market leaders specializing in pneumatic components which supplies to the global market. The product range is from primary type for general occasion, to high-end environment. The innovations are released and awarded every year to correspond to Industry 4.0 trend.

Today, Chelic operates product development and manufacturing for eight ranges – FRL units, valves, actuators, vacuum equipment, electrical actuators, and so on. Furthermore, the pneumatic components distribution and technical supports through subsidiaries and overseas' distributors.

## U series F.R.L Combinations



By establishing an R&D center in Taipei, Taiwan, the company consistently demonstrates its capacity for innovations in new designs, which are continually honored with TAIWAN EXCELLENCE on a year-to-year basis. Along with strict adherence in manufacturing and being detail-oriented, every employee looks for providing outstanding quality service.

Chelic prides itself in providing its customers and partners with products that are highly-efficient, energy-saving, and competitive in various industries.

## VKM series Module Type Vacuum Ejector



## PRE series Oval Piston Mechanically Joint Rodless Cylinder





SHIHLIN ELECTRIC & ENGINEERING CORPORATION

士林電機股份有限公司

<https://www.seec.com.tw>

Established in 1955, SHIHLIN ELECTRIC & ENGINEERING CORPORATION (SEEC) (TAIEX:1503) has expanded its operations from basic construction to public works. From the development of electrical power resources to assisting with industry upgrade. The company has been persistent in its firm belief of "improvement over time" in running its operations and in corporate development. As such, the company plays a pivotal role in Taiwan's domestic electrical industry.

SDP-A



SDE



SDP



SEEC has been a leader in the domestic market with advanced technology in heavy electrical systems, electrical equipment, machinery and automation. In the overseas market, the company has also performed well, with sustained growth. The company has engaged in joint ventures with famous international firms in ODM and OEM production. This has strengthened the R&D capacity of the company, manufacturing to international standards in terms of specifications and technological know-how.

The involvement in digital image channels and optoelectronic and system integration symbolizes the transformation and diversification of the company and its effort in developing the international market.



**TECO ELECTRIC & MACHINERY CO., LTD.**  
**東元電機股份有限公司**

<https://www.teco.com.tw/en>

Founded in 1956 for motor production, TECO Electric & Machinery Co., Ltd. (TAIEX:1504) has evolved to a major business group. It spans from heavy electric equipment, home appliances, information technology, and more. Its business scope covers over 100 cities in more than 40 countries. In recent years, the conglomerate developed and expanded to renewable energy industries such as EV powertrain system, offshore wind power business, and solar power energy storage projects.

TECO Servo Motor  
JSMA series



TECO Servo Motor  
JSMA PMB Medium  
Inertia Motor



TECO Servo Motor JSMA  
PUC Low Inertia Motor



TECO Servo Motor  
JSMA PBH High  
Inertia Motor



TECO develops, manufactures, and services sophisticated value-added electrification solutions. It focuses on bringing the latest technologies for motors, drives, gears as well as engineered system solutions.

TECO Automation and Intelligent System Products are capable of offering forward-looking automated industrial application services. It includes servo-driving technology, PLC and HMI human-machine interface, and smart solutions, which can meet the needs of flexibility, energy saving, and high performance of production lines.



# SMART MACHINING TOOLS

- CNC Cutting Machine
- CNC Forming Machine
- Semi/LED/PCB Manufacture Equipment
- Automatic Loading System

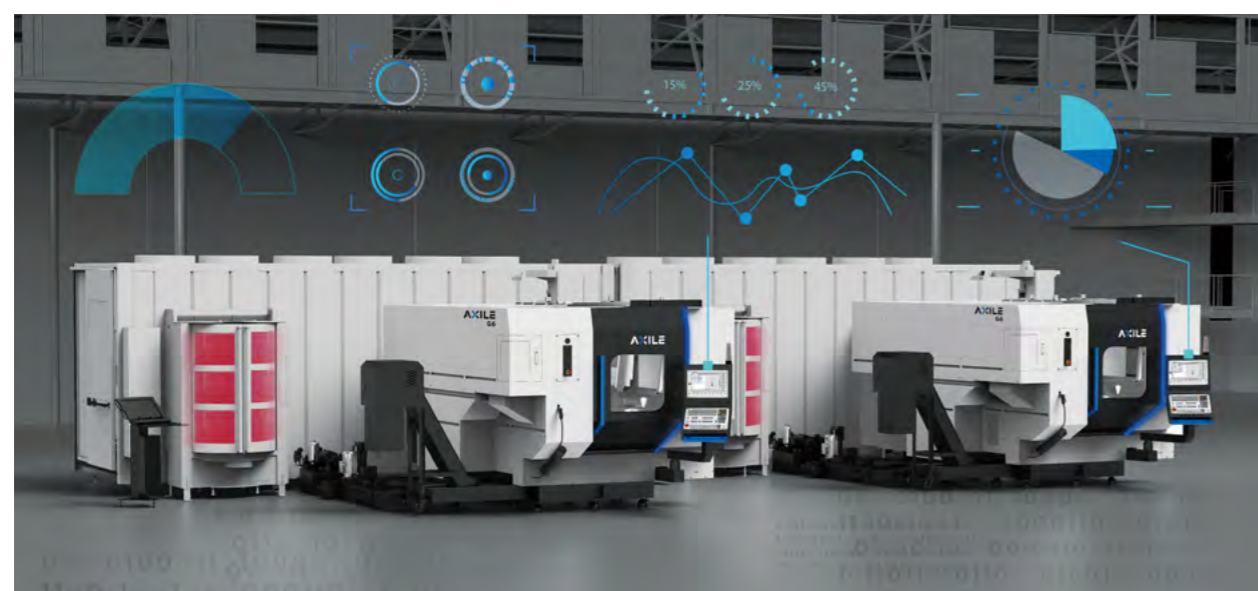


**BUFFALO MACHINERY COMPANY LIMITED**  
**達佛羅股份有限公司**

<https://www.axilemachine.com>

AXILE designs and builds agile smart 5-axis VMCs with leading automation solutions for manufacturers of complex parts and components. AXILE believes manufacturers shouldn't have to choose between high-speed and high-performance 5-axis machines. By combining sheer agility, digitalized intelligent automation, and a new standard of 5-axis machining, AXILE created an all-new approach: Agile Smart Machining.

Digitalized Intelligent Automation is AXILE's brand of smart manufacturing, combining advanced machining technologies and reliable automation solutions, to ensure optimal operations.



The patented SMT™ (Smart Machining Technology) and ART™ (Intelligent Monitoring Technology) streamline the adoption of AXILE pallet changing automation solutions, by offering operators total peace of mind. With real-time, data-backed insights from ART™, and autonomous compensatory interventions from SMT™, machine operators can confidently embrace 24/7 production, with no unplanned downtime.

ART Technology



G6 MPC Automation





CHING HUNG MACHINERY & ELECTRIC  
INDUSTRIAL CO., LTD.

慶鴻機電工業股份有限公司

<http://www.chmer.com/products.php>

CHMER was founded in 1975 to produce Die Sinker EDM for the mold making industry. It's a machine tool company that has been operating for 45 years. The original focus was on building cutting-edge EDM machines. By 1980, CHMER was the leader of EDM in the Taiwanese market. In the early 1990s, it expanded its operation, building three factories one after another in China to have a higher productivity. In 2009, the company moved to its latest headquarter, that sits on an area of 28,000m<sup>2</sup>, for the purpose of global operations and R&D center. Up to this day, CHMER is the fifth-largest EDM manufacturer in the world.

High Precision Linear Drive Laser Cutting Machine PL6880



CHMER obtained 42 national awards over the past decade. The list of a wide range of national awards includes outstanding management performance, technological innovation and good design of product, etc.

As Industry 4.0 has driven rapid adoption of intelligent manufacturing methods in recent years, CHMER has developed a strategic vision for intelligent manufacturing based on the creation of an entire ecosystem. As General Manager Chen-Hong Wang explains, the 1st step for an equipment manufacturer like CHMER is to supply intelligent machinery; the 2nd step is to integrate intelligent production into the company's own manufacturing processes, and the 3rd step is to help customers create intelligent production lines.

Intelligent Linear Motor Drive Wire Cut EDM RV853L





**COSEN MECHATRONICS CO., LTD**  
**高聖精密機電股份有限公司**

<https://www.cosen.com/>

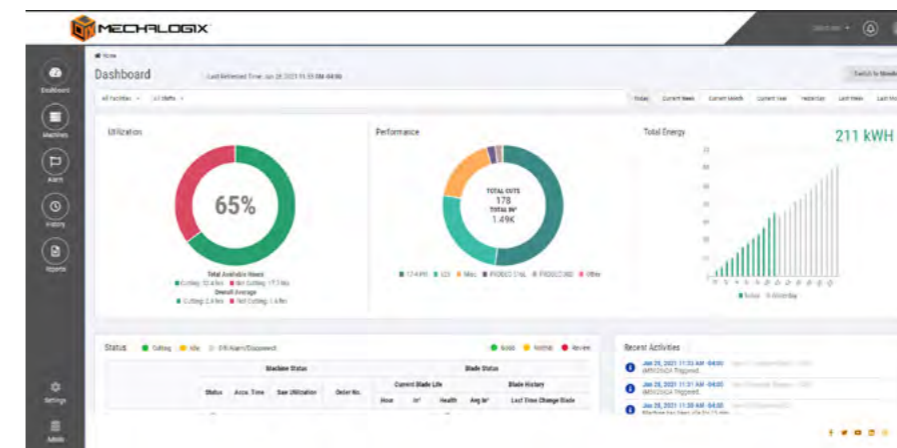
Founded in 1976, Cosen is one of the world's leading band saw manufacturers with a broad product line and a global sales network including Cosen USA and Cosen EDC. Cosen offers 180 models including vertical, horizontal, miter-cutting, NC & CNC automatic, customized band saws automation production line solutions and Drilling & Sawing Beam Line. Capacity ranges from 200 to 3200 mm.

**SNC Automatic Saw with Shuttle Vise G320**



The diverse cutting abilities of Cosen machines serve numerous industries such as construction, automobile, transportation, wind power generation, etc. Cosen was rated as the No. 1 Service Center Equipment Brands by U.S. Metal Center News in 2015. In 2016, the company launched the world's first Industry 4.0 Sawing Tool Health Assessment –Cosen Performance Cloud (CPC), CPC-Connect. It serves as a portable diagnosis of devices, allowing for Plug-and-See useful cutting info. on website and mobile, and run automated reports. Some of the value added benefits of Mechalogix CPC includes: changing the blades more efficiently; save time & save failure cost; anticipate the cause of the problem; labor savings of up to 30% and more.

**Mechalogix Dashboard**



**CPC Connect**





**EVERISING MACHINE COMPANY**  
**合濟工業股份有限公司**

<https://www.everising.com/>

EVERISING has been specializing in mid to large size band saws and circular saws since 1982. Its R&D innovations have yielded constant breakthrough over the years. The company has two factories in Taichung, Taiwan, and another in Kunshan, China with a yearly output in excess of 2000 units. In Taiwan, sales offices are established in Taipei, Taichung, Tainan, and Kaohsiung. In China, it has over ten branch offices and service centers throughout, providing complete pre-sales and after-sales services with full-scale sawing technology. Everising has more than forty sales distributors around the world, and its equipment can be found in over sixty countries worldwide.

■ Fully Automatic Band Saws S-300HB



■ Hi-Tech Band Saw E-530



■ ILA Type P-75ILA



The company is already recognized as a major manufacturer of sawing machines worldwide. Employing a superior R&D team of distinguished engineers, well over 60000m2 production facilities with the best applicable technology, supplying to steel, aluminum, stone, quartz, and silicon sawing market. During this growth the company has enjoyed continuous affirmation of their quality in the form of CE certification since 1994, ISO 9001 since 1995, ISO 9001-2008 version since 2009. EVERISING's products are displayed yearly at world-renown machinery exhibitions like TIMTOS, CIMT, EMO, JIMTOF, TMTS, IMTEX.



**FACTORY AUTOMATION TECHNOLOGY CO., LTD.**  
**發得科技工業股份有限公司**

<http://www.fatek.com.tw>

FATEK Technology Co., Ltd. is a machine tool manufacturer of FEMCO Group in Taiwan. The company specializes in developing and producing machine tools. CNC machine tools that the company manufactures include Horizontal boring machine, vertical/horizontal lathe, wheel processing machine. For industrial automation, FATEK offers hardware integration, intelligent management system introduction, whole plant configuration scheme. Its main customers are the world's top supply chains of automobile & aerospace industry, oil & gas industry, and other fields.



FATEK provides its users with professional automation integration, unique customized fixtures, processing optimization and production line integration and other key factory solutions. FATEK also assists end users to smart management in order to help them enhance their product value. Its pioneer 3D Modular Management System quickly integrates drawings and materials into manufacturing processes, and can flexibly adjust component specifications to meet the processing needs of its customers.

The core value of FATEK is "Innovating and Exquisite Manufacturing". It's not only applied to producing machine tools but also applied to the after-sales service. The company provides long-term service and is devoted to giving its customers instant solutions to achieve real time support.

■ CNC Vertical Lathe NVL-12



■ CNC Horizontal Boring Mills BMC-110FT2





**FAIR FRIEND ENTERPRISE CO., LTD.**  
**友嘉實業股份有限公司**

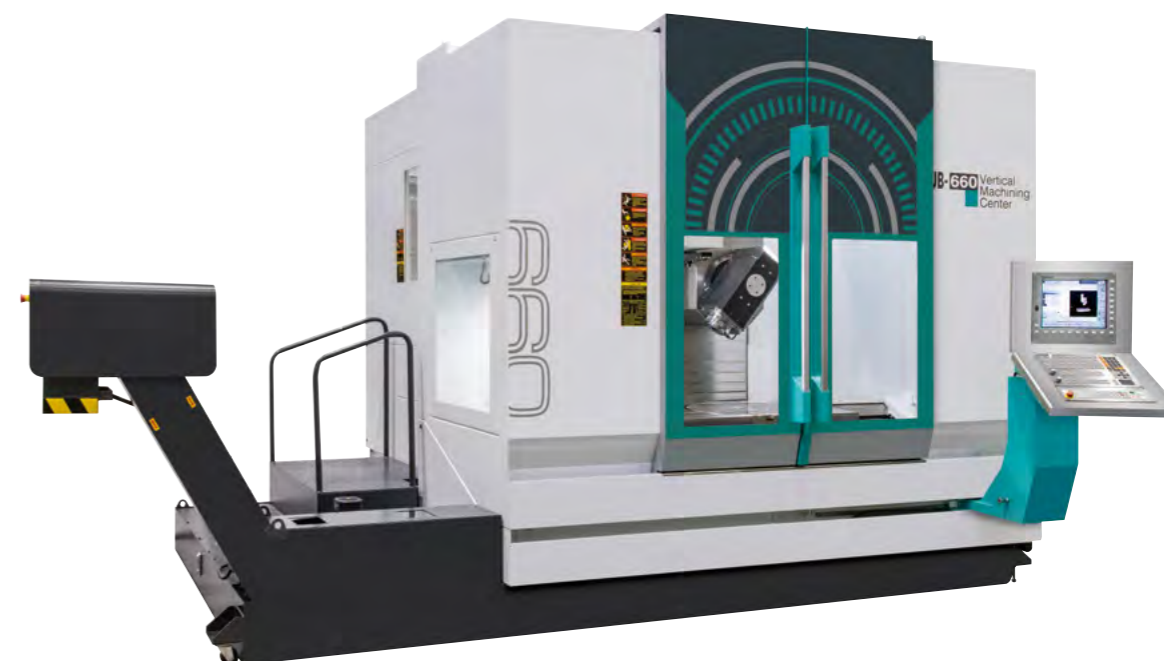
<https://www.feeler.com/>

Fair Friend Group (FFG), is the world's third-largest machine tool group. The brand name FEELER was established for overseas marketing. It is a machine tool equipment manufacturer. They provide turning, milling, 5-axis, gantry type, horizontal boring machines, automation production line, turnkey.

5-Axis Vertical Machining Center U-800T



5 Axis Vertical Machining Center UB-660



FEELER has effectively integrated R&D resources and enhanced product competitiveness after acquiring major machine tool manufacturers in Europe and the U.S. The introduction of high-end 5-axis machines has won the favor and affirmation from customers. At present, FEELER has an R&D team of 60 people and more than 100 technology patents and awards from many countries.

Their future operation goal is focused on assisting customers to transform into smart factories. Semiconductor, automotive and electronics production lines are moving towards "Lights out" manufacturing. FEELER proposes a cloud situation room planning service that allows customers to monitor their factories 24 hours a day from the cloud. This includes machines' information, utilization rate, predictive analysis, etc., providing customers with real-time status of the factory at any time.



**GOODWAY MACHINE TOOLS GROUP**  
**程泰亞崑集團**

<https://www.GOODWAYCNC.com/> <https://www.AWEA.com/>

Established in 1975, the members of GOODWAY GROUP (TAIEX:1583) include GOODWAY, AWEA, EXTRON and YAMA SEIKI. Their products range covers more than 800 kinds of turning centers, machining centers and grinding machines marketed globally through their networks in 48 countries. In recent years, responding to the market trends of "intensive production" and "smart manufacturing," it has developed a full range of solutions.

Multi-tasking Machine GOODWAY  
GMT-2000 Series



GOODWAY GROUP, having devoted itself for nearly half a century in the machine tool industry, continues to pursue the creation of more value for its customers. This motivates them to make machines smarter and more user-friendly, and thus it has developed their own software systems G.LINC and AiLINC.

The new generation of G.LINC - intelligent HMI system offers higher speed in hardware and operating systems. AiLINC, the intelligent control system, combines convenient operation, intuitive information access, and easy learning. With clear machine information and operation, powerful intelligent functions, and advanced AI technology, your machines can link up with the world in the era of Industry 4.0.

Moving Column Multi-face Machining Center  
AWEA MCP series







JAINNHER MACHINE CO., LTD.  
鍵和機械股份有限公司

<https://www.jainnher.com/>

Jainnher is a leader in grinding technology for the automobile and motorcycle parts industries. It has 40 years of experience in the grinding machinery field. In order to meet the volatile demand, Jainnher designs and develops more than 22 kinds of grinding machine products. Its annual capacity is around 400 machines, and the manufacturing flexibility enables its team to respond to customer orders quickly. It also provides automation solutions to industries such as aerospace, automotive, electronic, medical, precision hardware and commercial parts.

Thread Grinding Machine  
JHT-4010CNC



JHC-18S-CNC8



Cylindrical Grinding  
Machine JHU-3520CNC



Grinding machines are one of the key machineries which customers are most concerned about, as it affects their production quality. To ensure production stability, 90% of a machine's critical parts are self-made and processed in Jainnher's own factory. ISO 9001 certification shows the company's commitment to quality, compliance with regulations, and customer satisfaction.

Jainnher also realizes smart manufacturing through IT in the CNC grinding sectors with engineer's IPC. The company's sales territory covers 40 countries, and it has more than 55 distribution locations around the world. It also has long-term cooperation with distributors in Europe, America, and Asia to provide complete service in different time zones.



**JOEN LIH MACHINERY CO., LTD.**  
**準力機械股份有限公司**

<https://www.joenlih.com/>

Joen Lih is an experienced maker of high-precision CNC surface grinding machines. It specializes in making manual, semi-auto and fully automatic series of grinders, and also offers customized service. Joen Lih was established in 1988, and it believes in constant improvement as the key to success. Thus, the company continues to look for reliable partners to work with, and to provide their service to customers around the world. Joen Lih has its own R&D team, and it also cooperates with professional research institutes, such as Industrial Technology Research Institute (ITRI), a top research institute in Taiwan.

■ **CNC Profile Grinding Machine For Grinding Rail  
Carriage 50400CNC**



■ **Rotary table series  
Carriage 300SCG II**



■ **Carriage Grinding  
Machine 3080CNC**



Joen Lih continues to provide high quality, competitive products to customers. Its insistence on "quality first" is manifested in its ISO9001 certificate. In addition, the company puts a lot of effort in inventing new products in order to meet market demands. Recently, it has made progress on making wafer grinding machines and is continuing to try merging their industry with Internet of Things (IoT). The company believes cloud computing can help it provide more convenient service to its customers.



**KAO MING MACHINERY  
INDUSTRIAL CO., LTD.**  
**高明精機工業股份有限公司**

<https://www.kaoming.com/>

Kao Ming Machinery Industrial Co. Ltd. (KMC) specializes in manufacturing high accuracy, rigidly stable, large machines. They are applied by diverse industries, such as automobile machining, mold industry, green industry, and aviation manufacturing.

In recent years, KMC started to focus on machine mold, customization and smart machines. It offers machines with short delivery time by executing TPS system, while conducting IoT system to update their latest news and service on social media. It also installs a small computer in the machine to monitor its condition.

High-Speed Vertical Machining Center  
KMC-168CE



For the design of its vertical machine, it utilizes the keel design with stronger bending resistance. The inner cooled ball screw, coolant system in the bearing seat, and motor board with cooling circuit are to reduce thermal growth 32-36 m/min. unmatched rapid traverse rate beyond the industry average level 24-30 m/min. For its biggest machine, a 14-meter Gantry type machining center with a fixed table, it provides a maximum loading capacity of 10,000 kgf/m<sup>2</sup>, with almost unlimited loading. The rigid structure is especially ideal for extra-long and large workpiece machining, such as aircraft, and shipbuilding industries.

Gantry Type Machining Center  
KMC-1445G



# PALMARY

PALMARY MACHINERY CO., LTD.  
大光長榮機械股份有限公司

<https://www.palmary.com/en>

As a professional grinding machine manufacturer located in Taichung, Taiwan, Palmary Machinery has been producing a wide range of products since 1998. They include: Centerless Grinder, Cylindrical Grinder, Internal Grinder, Surface Grinder and Vertical Grinder in manual, NC & CNC types.

■ [OCA-3236H200 ] CNC Cylindrical Grinder with gantry type auto loading & unloading system



■ [PCB-3010-6] CNC Centerless Grinder with gantry type auto vibration feeder & unloading system



With an experienced R&D team, Palmary keeps offering a variety of different kinds of grinding machines with automatic function, such as auto external dia. or internal dia. size gauging, auto grinding wheel balancing and auto gap & crash control. The new Vertical Grinder series extend its outer dia. grinding range to 1200mm can help its customers become more competitive and offer a new choice in aircraft and shipbuilding industries.

In the automotive industry, the differential shaft pins need high grinding accuracy. Palmary provides 5-axis CNC Centerless Grinder with gantry type auto loading system to allow the differential size of shaft pins be ground in just one set-up. This grinding machine auto cycle includes loading, infeeding, grinding, wheel dressing, unloading and automatic external size measuring. The high efficiency grinder and time-saving operation solution always meets high accuracy and mass production.

■ [OIG-200D] CNC Internal Grinder with Fanuc robot





**QUASER MACHINE TOOLS, INC.**  
**百德機械股份有限公司**

[https://www.quaser.com/index\\_en.htm](https://www.quaser.com/index_en.htm)

QUASER MACHINE TOOLS, INC. (TAIEX:4563) was established by Mr. Edward Shar and Mr. Samuel Shieh in 1991. The company name is based on fundamental principles for success in the machine tool industry - QUALITY, SERVICE (QUA SER) and continuous design innovation.

It provides a wide range of vertical, horizontal, 5-axis and mill-turn machining centers. These product lines can be combined with full automation equipment such as pallet changers, full FMS cells and robotic technology.

Horizontal HX504



Multi Face 5 Axes UX500



QUASER's vision is to become a top player in industrial application solutions worldwide by using high precision quality platform to integrate high-tech application into systems, such as Laser, EDM, and its new product high-speed milling turning and grinding.

To provide total solution to different sectors, i.e. customers in aerospace, semiconductor, EV, medical, mold & die. The company has developed the new 5-axis EDM machine series for semiconductor silicon plate drilling, laser hole drilling in fuel cell 500 holes per sec., and 1/100 aspect ratio micro hole drilling for medical. Normally, 1/10 or 1/20 is the limit.

The company expanded into an international group, and actively promotes innovation in order to achieve responsible manufacturing and to provide customers with a comprehensive range of competitive solutions. It is the partner for many well-known machine tool builders in Japan, Germany, and the UK.



**ROUNDTOP MACHINERY INDUSTRIES CO., LTD.**  
**喬福機械工業股份有限公司**

<http://www.johnford.com.tw/>

Roundtop Machinery Industries Co., Ltd. (TAIEX:1540), or better known as JOHNFORD, is one of the leading manufacturers of CNC machine tools in Taiwan. Apart from standard and medium-sized machines, it specializes in custom-made machines such as 20-meter Portal Machining Centers, large-sized Mill-Turn Machines, and special-purpose Twin Spindle Drilling Machines.

SDMC-11000-TU35



Johnford excels at putting customers' requirements and machining concept into realization. It has its own CNC department to program every machine, ensuring its reliability and functionality. For example, the 20-meter X-axis Portal Machining Center with a W-axis is a huge machine that only a few experienced manufacturers can make. Nevertheless, the company has already made over 5 of them.

In addition to the versatility of product range, the manufacturing quality is crucial. Many key components are made by JOHNFORD itself, while others are mostly from Germany. Before each delivery, each machine must go through a meticulous inspection and test run.

SMC-4200-2H-2



# DOWELL®

TONG YI MACHINERY INC.

銅翌機械有限公司

<https://www.dowellmachines.com/>

Since its establishment in 1996, DOWELL surface grinder manufacturer has held the company philosophy of "Keeping & Improving". It listens to customers' demands and is devoted to R&D to build better grinders. DOWELL produces a wide range of grinding machines including manual, semi-auto, auto, NC and CNC, double column grinding machine and rotary surface grinders. Furthermore, it also develops precision rack grinder and high precision multi-function (vertical and horizontal) grinding machines.

## Horizontal Rotary Surface Grinder HR-800AND



## NC/CNC Surface Grinder DSG-2032ANDII

DOWELL follows the company's philosophy "Keeping & Improving" forever. With customers' demands, it continues to conduct R&D and innovation to provide various accurate level grinding machines. The company accumulates manufacturing experiences with "practical" as the foundation, "simple and easy to operate" as the principle. From manual shaping grinding machine, semi-automatic grinding machine, fully-automatic grinding machine of 3-axis, NC level grinding machine, rotary surface grinder, all machines R&D and design follows these principles. DOWELL believes it can offer perfect quality service for every customer.





**TONGTAI MACHINE & TOOL CO., LTD.**  
**東台精機股份有限公司**

<https://www.tongtai.com.tw/en/>

Tongtai (TAIEX:4526) is a leading Taiwanese machine tool manufacturer and well-known for its Turnkey Solutions. The product lines are not limited to multi-tasking turning centers and 5-axis machining centers, but also special purpose machines, CNC lathes, machining centers, and PCB equipment. Tongtai has also developed ultrasonic assisted machining, laser machining and metal additive manufacturing.

The foundation of Tongtai consists of technology, which has been granted more than 200 patents globally. In addition to selling different types of machine tools, the company offers various choices in functional modules and customized services. With the benefits of technological integration in software, automation, intelligence, and trial machining, Tongtai is able to provide the most appropriate Turnkey solutions to worldwide customers. Furthermore, Tongtai has been certified as an automation service provider by the Taiwanese Industrial Development Bureau (IDB), Ministry of Economic Affairs.

■ CT350 with automated loading and inspection



Tongtai has more than 20 offices worldwide and agents in more than 60 countries. Moreover, Tongtai has established Tongtai Technological Application Center (T-TAC) to provide direct technological services in Taiwan, China, Thailand, Malaysia, Turkey, and Switzerland.

Tongtai offers machining solutions to customers worldwide, and in diverse industries, including automotive aerospace, and the growing industries of EV, 5G, and Semiconductor. In the era of intelligent manufacturing, Tongtai can provide solutions including single machines or product lines.

■ TD-2000YBC



■ VP-8







VICTOR TAICHUNG  
MACHINERY WORKS CO., LTD.  
台中精機股份有限公司

<https://www.victortaichung.com/>

Victor Taichung Machinery is one of Taiwan's biggest machine tool manufacturers. It specializes in machining centers, lathes and plastic injection molding machines. Victor Taichung's powerful vertical integration capabilities of casting, sheet metal working, machining and assembly differentiate it from other precision machinery makers.

OR Victor Taichung Smart Factory and Global Operations Headquarters



Victor Taichung is committed to incorporating IT into its products and it has been doing so for over a decade. Now Victor can go further with the use of the Victor Smart Box (VSB), a platform that helps the client to carry out real-time machine monitoring, utilization rate management, tool life management and more.

Industry 4.0 has become a hot topic in global manufacturing. The company has built a brand-new smart factory with eight Victor Smart Production (VSP) lines, four smart machining lines (VSM), replanning the manufacturing process. Furthermore, Victor is introducing a smart logistics system together with Formosa Heavy Industries and China Motor's GreenTrans AGV, integrating ERP and MES systems.

Vertical Machining Center Vcenter-AX630 (5-axis machining)



Multi-Tasking Milling - Turning Center VMT-X200





**YEONG CHIN MACHINERY**  
**永進機械工業股份有限公司**

<https://www.ycmcnc.com/en>

Founded in 1954, Yeong Chin Machinery Industries Co. Ltd. (YCM) specializes in machine tool manufacturing. YCM machine tools have been recognized worldwide for superior precision, outstanding rigidity and exceptional reliability. With nearly 70 years of machine tool manufacturing experience, YCM has established a strong foundation in the field of machinery. The company offers dependable manufacturing process.

Starting from strong engineering and design, to sound packaging and shipment, YCM machines are all produced in their own vertically integrated and controlled manufacturing facility.

With the emergence of IoT and widespread connectivity of factories, digital transformation has been imperative in keeping a competitive edge. Through the innovation of their engineering team, YCM provides innovative smart manufacturing solutions, enabling customers to adopt smart automation, smart machines and smart management, allowing optimized production and efficiency, resulting in higher profitability.

**YCM Ultimate 5-axis Technology**



YCM products being applied in many key industries, such as die & mold, aerospace, automotive, etc. It offers an impressive product line that includes: 3-axis machining centers, 5-axis machining centers, double-column machining centers, 2-axis turning centers, and multi-axis turning centers.

“Sustainable development, becoming one of the top value machine tool manufacturers in the world” is YCMs vision. In today's manufacturing world, there is an obvious shift from globalization to localization. Advanced countries in the world are looking for new technology and solutions to improve competitiveness and take back manufacturing from developing countries. They are looking for ways to make things faster, better and with lower cost. YCM is dedicated to develop equipment and technologies that help customers continuously improve their competitiveness and achieve sustainable growth. YCM has over 50 sales and service locations around the world.

**Dependable Manufacturing Process**





CHIN FONG MACHINE INDUSTRIAL  
CO., LTD.

金豐機器工業股份有限公司

<https://www.chinfong.com/en/>

Since 1948, Chin Fong Machine has grown into the largest manufacturer of mechanical power presses in Taiwan. In recent years, it has begun promoting digital transformation, integrating stamping equipment with the Internet of Things (IoT), and introducing intelligent forming solutions based on stamping and forging experience.

Chin Fong is the leading manufacturer of mechanical power presses in Taiwan and one of the five largest in the world. It has adopted a new business model in recent years, applying advanced IT technologies such as IoT and AI as the framework to integrate customers' operations and management. Based on the latest intelligent forming management system - iForming, it is able to assist customers in their transformation from traditional manufacturing to smart manufacturing and towards digital transformation.

Generic Stamping Press



Straight Side Single/Double Crank  
Direct Drive Servo Press

In its 70+ years of history, Chin Fong has continued to provide customers in various stamping fields with diversified, reliable, and high-quality stamping equipment. In the past 25 years, it has achieved sales of more than 60,000 units of its equipment. It has distributors in major cities all over the world that can provide after-sales service.





**LIEN CHIEH HYDRAULIC INDUSTRIAL CO., LTD.**  
**連傑油壓工業股份有限公司**

<https://LCH.com.tw/>

Lien Chieh was founded in 1947. In 1982 Lien Chieh Hydraulic Industrial Co., Ltd. (LCH) was established based on the principles of incorporating presses with high-performance, high-quality, reliability, safety, and energy efficiency.

In response to the increasing demand in composite materials, LCH has been focusing on presses making products using composite materials such as SMC, BMC, GMT, and CFRP. The products include car underbody shield, fiber glass door skin, etc. LCH is the only Taiwanese press manufacturer who provides the CFRP presses.

2200 Ton ECO Servo Tandem Press Line



Moreover, LCH's Eco Servo series is the latest patented innovation that can be integrated with servo motors. It can save up to 20% energy consumption and 20% noise reduction. However, end-users have been reporting that their newly purchased LCH Eco Servo Presses are saving more than 30%, 40% and even 50% compared to other brand presses in their factories. The company is actively making progress on a new press series for Industry 4.0.

By cherishing its principles, LCH has earned a place among few of the earliest power press manufacturers to obtain CE and Taiwan Power Press Safety certifications.

300 Ton Die Spotting Press





SHIEH YIH MACHINERY INDUSTRY CO., LTD.  
協易機械工業股份有限公司

<https://www.seyi.com>

SEYI (TAIEX:4533) is a Taiwanese stamping press specialist with more than 55 years of experience. It manufactures mechanical presses ranging from 25 tons to 2400 tons and servo presses from 80 tons to 2400 tons. In addition to standalone presses, SEYI also offers one-stop shopping smart stamping solution based on customers' demands. These include presses, peripherals, and automation.

— Straight Side Eccentric Gear Servo Press SDG-880



Under Industry 4.0, machines with connectivity and integration with automation system is vital. SEYI's Smart Stamping Solution, with smart machinery foundation can help customers to further realize smart production and smart management based on their needs. Via Internet of Things (IoT), all data on the condition of presses and peripherals can be collected and organized in the database. In addition, tonnage monitor, die protection, motor status, temperature, lubrication and power consumption can be traced. The stamping process monitoring can largely lower the risk of human error. By means of remote diagnosis or after-sales APP, this can make troubleshooting less time-consuming and enhance the production efficiency.

SEYI's products have been delivered to more than 50 countries. In Taiwan, China, USA, Germany and Thailand, each SEYI's subsidiary has professional after-sales service teams to provide technical support.

— SEYI's Smart Stamping Solution





Shuz Tung Bending Machines

SHUZ TUNG MACHINERY INDUSTRIAL CO., LTD.

旭東機械工業股份有限公司

<https://www.shuztung.com/>

SHUZ TUNG (TAIEX:4537) is a global market and technology leader in the BICYCLE industry. It specializes in manufacturing of CNC/NC tube bending machines, metal tube forming machines, turn-key plants for bicycles production, and much more. The products range consists of more than 4,000 models which are sold around the world.

The road from the company's origins to global market leadership has been shaped by a no-holds-barred approach to product and service quality, along with absolute reliability and strict adherence to deadlines.

### 3D Laser Cutting Machine



The company's aim is to continue to provide highly competitive machines for customer demands from a range of industries, including bicycle industry, automotive, aircraft, shipbuilding, and wind-power. SHUZ TUNG cares for the environment – it's ISO 9001 / ISO 14001 certified as well as AS9100D / ISO 45001 certified.

Today SHUZ TUNG operates engineering and manufacturing facilities in Taichung, Taiwan. The company maintains a global presence with sales and service agents in Japan, Korea, Russia, Indonesia, India, Poland, Hungary, Canada, Brazil, and Mexico.

### Automation Integrated





**SOCO MACHINERY CO., LTD.**  
**和和機械股份有限公司**

<https://www.soco.com.tw/>

Founded in 1979 in Central Taiwan, SOCO Machinery is today one of the top three tube machinery manufacturers in the world and the first company in Taiwan to apply laser cutting technology to the tube and pipe industry. As the founder and leader of this industry in Taiwan, SOCO has built its reputation with partners and customers around the world.

SOCO delivers customer-oriented CNC machinery solutions for tube and pipe processing, such as tube cutting machines, tube benders, chamfering machines, and end-forming machines. The company's goal is to constantly upgrade and innovate technology and quality. A strong R&D team constantly applies cutting-edge designing technology to reach greater efficiency.

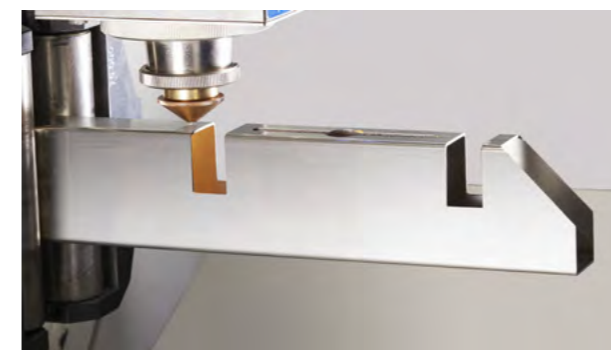
■ **SLS-3015 Laser Cutting Highlight**



In your everyday life, you can easily find products made by SOCO. SOCO's machines can be used in a wide range of industries and applications: from healthcare to fitness, automotive to shipbuilding, construction to furniture, and playgrounds to scaffolding.

In more than 40 years of its history, the company has established an international network of partners and customers. With 25 global branches and over 40 active partners in all major continents, SOCO continues its pursuit of excellence and leadership with the continuous support of its customers, partners, and employees. As the company targets the global market, it adopts a flexible business strategy to provide optimal service to customers and exceed their expectations.

■ **High Precision Laser Cutting**



■ **SB-32X7A-2S-V-U**





**YING HAN TECHNOLOGY CO., LTD.**  
**穎漢科技股份有限公司**

<http://www.ylm.com.tw/>

YLM (TAIEX:4562) started with manufacturing of tube bending machines. Now it is not only known as the world's Top 3 tube bender brands, but in addition, YLM has successfully expanded into production of Machining Center, Laser Cutting, Robot, Robot Welding, and all kinds of machines inside the scope of smart factory.

Founded in 1975, YLM has been appraised by Taiwan's government and awarded the Symbol of Excellence for the best design "Taiwan Excellence Awards" for most innovative and high-quality products. In 1980 YLM was granted ISO9001, then escalated IPO as a public company in 2017 for its diverse products and customer base.

YLM Lasertube 3D Pro



YMLasertube Pro



CNC Electric Tube Bender



YLM has helped its customers automate their production by offering innovative technology and global service, covering over 50 countries. Its self-developed control system on PC, central control system, tech mode, integrated ICT, and intelligent soft/hard integration, have been practiced in different smart factories.

Backed by strong technology and R&D, YLM now aims at high quality solutions for demands from different industries, including Industry 4.0 and Environmental.





東捷科技股份有限公司  
Control Technology Co., Ltd.

## CONTROL TECHNOLOGY CO., LTD. 東捷科技股份有限公司

<https://www.control.com.tw/>

Control Technology is the equipment leader in FPD and semiconductors. It's also been dedicated to laser equipment repair with 23-years of experience. Products include: Panel and Semiconductor automation product lines, Optical inspection equipment, and Laser application equipment. It is also able to provide factory turnkey solutions of TFT-LCD manufacturing starting from array, cell, to LCM process. Furthermore, a smart factory could be built as per customers' request.

Control intends to make AI function a primary focus of its product development in response to the smart manufacturing trend e.g., defects in panels could be identified automatically and the repair path could then be planned instantly. Furthermore, since Micro LED is emerging as the next-generation in displays, the company has been involved in the Mini/Micro LED display market and has successfully debuted its equipment for the market. The custom equipment is developed successfully for rollable Mini LED emissive display featuring active matrix (AM) driving technology for the customer. Control also provides other diverse equipment.

### Micro LED Repair Equipment

### Mni LED Inspection Equipment





FITTECH CO., LTD.  
惠特科技股份有限公司

<https://www.fittech.com.tw/>

Established in 2004, FitTech Co., Ltd. (TAIEX:6706) committed itself to developing LED test equipment for over a decade, and pioneered the LED Prober & Tester System.

In addition to the well-known LED tester and sorter solutions, FitTech committed to laser diode (LD) testing solutions for VCSEL, PD, DFB, FP, EML, etc. It also established "Advanced Laser Microfabrication Technology R&D Center", aiming for R&D of laser micromachining technologies, including: laser cutting, laser wafer marking, laser strip marking, laser ceramic drilling, laser scribing and laser cleaning, which are applied in the semiconductor and PCB industries.

■ Laser Diode Testing and Sorting System



To achieve the trend and vision of industry 4.0, FitTech has been committed to develop automation solutions for several years, and already launched the one and only LED automation testing and sorting solution in LED industry. FitTech will continue to dedicate itself to R&D solutions for automation, and also the integration with AI technology and digital management system.

FitTech's headquarter is in Taiwan, and it has technical service offices and agencies in China, Japan, Korea, Malaysia, & USA.

■ Auto Laser Tray-in Marking System



■ Auto Laser Drilling and Scribing System



# GPM 均豪精密

## GALLANT PRECISION MACHINING CO., LTD. 均豪精密工業股份有限公司

<http://www.gpmcorp.com.tw/en-global>

Gallant Precision Machining Co., Ltd. (GPM) (TAIEX:5443) specializes in providing solutions for smart manufacturing, advanced process equipment for the semiconductor industry, and process equipment for the display industry. GPM has a comprehensive range of smart manufacturing solutions, with customers and service locations in Taiwan, North America, Southeast Asia, China, etc.

### Grinder



GPM is committed to providing first-rate technology, products and service to help customers innovate processes and enhance core competitiveness. The company's main business products and services are Semiconductor Industry Process & Detection Equipment, which it has independent key technology of IC pick & place as well as molding. It provides one-stop service for design, manufacturing, assembly and testing. For FPD Industry Process & Inspection Equipment, GPM focused on developing leading technology for new processes and equipment. In Solutions for Smart Manufacturing, GPM integrates nearly 43 years of experience in promoting automation systems and intelligent manufacturing in the display, semiconductor, and solar power industries. GPM's smart transportation system has system integration to information system, field equipment status, process characteristics and more.

### Wafer Automatic Optical Inspection





Shuz Tung Bending Machines

SHUZ TUNG MACHINERY INDUSTRIAL CO., LTD.

旭東機械工業股份有限公司

<https://www.shuztung.com/>

SHUZ TUNG (TAIEX:4537) is a global market and technology leader in the BICYCLE industry. It specializes in manufacturing of CNC/NC tube bending machines, metal tube forming machines, turn-key plants for bicycles production, and much more. The products range consists of more than 4,000 models which are sold around the world.

The road from the company's origins to global market leadership has been shaped by a no-holds-barred approach to product and service quality, along with absolute reliability and strict adherence to deadlines.

FOUP Inspection



FOUP / FOSB Pod



The company's aim is to continue to provide highly competitive machines for customer demands from a range of industries, including bicycle industry, automotive, aircraft, shipbuilding, and wind-power. SHUZ TUNG cares for the environment – it's ISO 9001 / ISO 14001 certified as well as AS9100D / ISO 45001 certified.

Today SHUZ TUNG operates engineering and manufacturing facilities in Taichung, Taiwan. The company maintains a global presence with sales and service agents in Japan, Korea, Russia, Indonesia, India, Poland, Hungary, Canada, Brazil, and Mexico.



UTECHZONE CO., LTD.

由田新技股份有限公司

[https://www.utechzone.com.tw/index\\_en.php](https://www.utechzone.com.tw/index_en.php)

Utechzone (TAIEX:3455), with the core technology of machine vision, has devoted itself to the production of Automatic Optical Inspection (AOI) systems for the past three decades. Integrating optics, image-processing algorithm, automation, mechanics, and motion control to replace human eyes, Utechzone's AOI system has successfully achieved both high-speed and superior precision.

PCB Compound Machine  
(Inspection + Metrology)



Continuing to develop advanced inspection systems to meet the needs of diversified industries, Utechzone provides a full range of PCB, FPD and Semiconductor AOI equipment. With rapid technological advancement from 5G, smartphones, electric vehicles to high performance computing, demands on higher-level PCB, Semiconductor and FPD technology are skyrocketing. The AOI system has become a necessity. Utechzone aims to expand its product line and provide complete solutions with AI-based AOI to accelerate the growth of smart factory and enable better resource utilization. Utechzone possesses nearly five hundred invention patents from Taiwan, the U.S., Japan and South Korea.

Wafer AOI WIM300





**AUTOMAC SMARTAUTO CO., LTD.**  
**奧圖瑪智動化股份有限公司**

<https://www.automac.com.tw/>

AUTOMAC is a professional supplier of CNC automation equipment, with more than 20 years of experience. The company focuses on the development of efficient production equipment and assisting customers in processing integration solutions.

AUTOMAC assists customers to transform in a rapidly changing era through innovative thinking, focusing on customers' needs. It also helps them through the development of products that can simplify processes, increase convenience and improve efficiency. This helps its customers maintain production quality and integrate services, and thus gain customer trust.

High speed auto-door for Robot



Products and Services:

1. Manufacturing and sales of Zero-Point clamping system.
2. Manufacture and sales of APL (Auto Parts Loader for VMC).
3. Manufacturing and sales of steady rest.
4. Manufacturing and sales of high-speed automatic doors for robots.
5. Integrated design and manufacturing of automation equipment.

AUTOMAC attaches importance to advance planning and good communication, and sharing relevant experience.

The company provides good standard products, but also customized products to help customers increase production efficiency and solve engineering problems.

Presently, AUTOMAC products continue to be sold in Taiwan. The company hopes to expand overseas in the future, and allow its products to enter all walks of life. At the same time, it also solicits overseas agents to further deliver their products to users and to help every customer.

Zero-Point clamp system





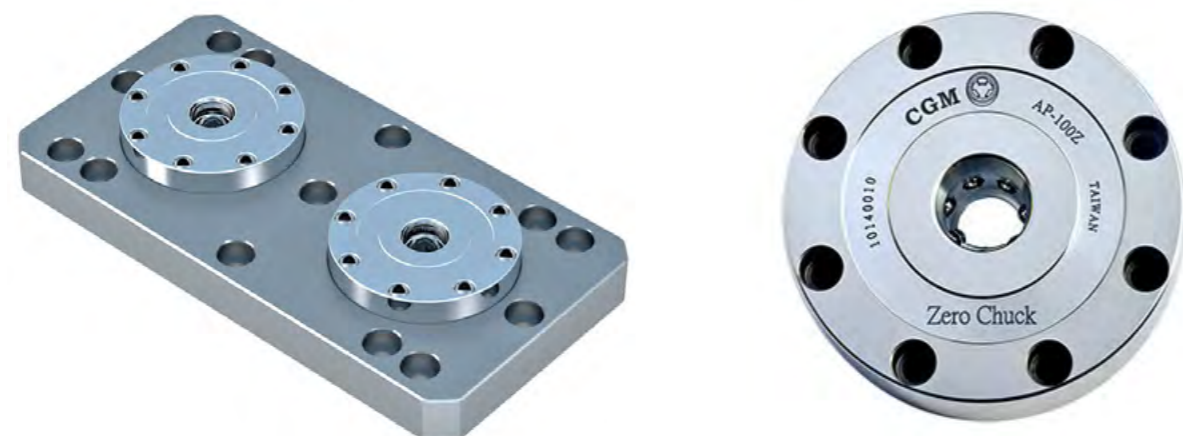
**CHERNG JIN TECHNOLOGY CO.,LTD.**  
**晟進科技股份有限公司**

<https://www.cgmchuck.com/>

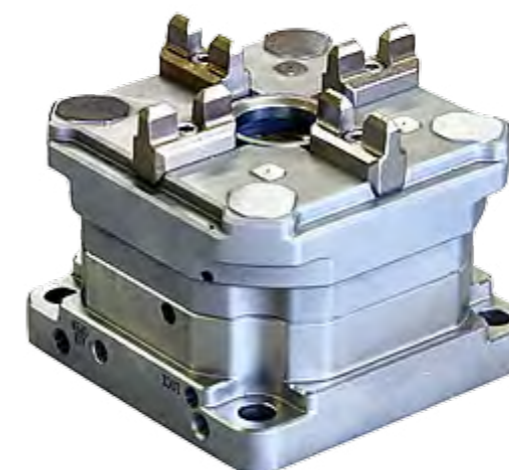
CHERNG JIN TECHNOLOGY CO. LTD. (CGM) specializes in manufacturing high-precision workholding fixtures for Machine Tools. Having over 18 years-experience in the field of Machine Tools for integration of workholding fixtures, the company has obtained more than 80 patents from both domestic and overseas countries (incl. USA).

Its precision workholding chucks are with repetition accuracy 2µm for applying to EDM, CNC and Milling machines, the same superior quality as of other reputed brands worldwide. In order to meet the requirements of the intelligent machinery trend, the chucks can combine with IoT and maximize the feedback function through sensors; in addition, it can be applied to special processing regarding vibration, pressure and temperature. Many of Cherng Jin's esteemed customers are from the Machine Tool industry, Aerospace and Robotic Process Automation who has applied its automatic chucks to their production 24/7.

**Zero Point Chuck**



**Pneumatic Chuck  
AE-88EBW**



**Pneumatic Chuck  
AD-100RC**



Cherng Jin devotes itself to the development of precision engineering as well as tool & mold manufacturing by producing high-quality, high-efficiency and high-value workholding products with CGM brand.



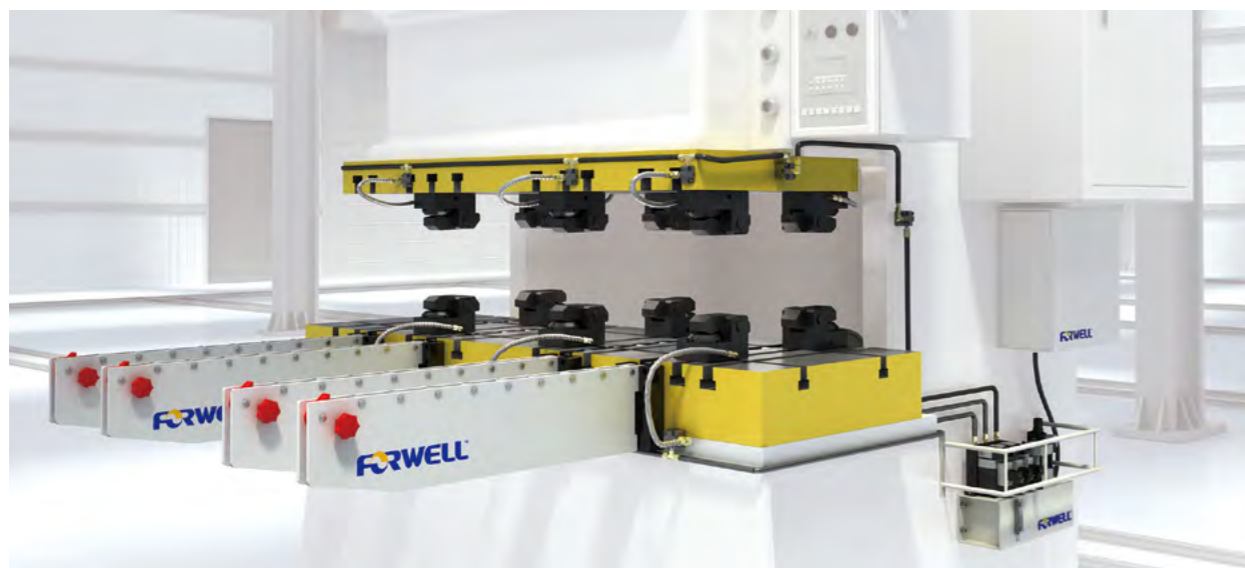
## FORWELL PRECISION MACHINERY CO., LTD. 富偉精機股份有限公司

<https://www.forwell.com>

Forwell Precision Machinery Co., Ltd. has technologies that increase the productivity of a plastics production and metalworking operation. The company has launched new solutions - such as die clamps, die arms, die lifters, etc. that have become industry standards in terms of efficiency and cost-saving benefits.

Future automation technology that is more mature and responsive to market demand is Forwell's main goals as it embarks on intelligent production development, investment in research and development of the whole plant automation. Its Quick Die/Mold Change System adheres to the concept of Industrial 4.0 in an era of smart technology.

### Quick Die Change System



Forwell has over 30 years of experience in developing Quick Die/Mold Change System and the company can offer its customers the best solutions for their metalworking and injection molding operations. The fully customizable Quick Die/Mold Change System drastically minimizes setup times, maximize efficiency and increase safety. The systems can be designed to fit almost any press, hydraulic press, injection molding machine and mold casting machine to allow for quicker die/mold change times, resulting in shorter machine down time and increased productivity. This system uses a special die/mold clamp that does not require a cut out on the mold, increasing its application versatility and allowing it to be used with a large number of different molds.

Forwell distributors are present in several countries and Forwell specialists are highly trained to meet the requirements of each customer.

### Quick Mold Change System







MITPSB TECH CO., LTD.  
明淨科技有限公司

<https://www.mitpsb.com/>

Ming-Jing Tech has more than 30 years of experience in precision turning, milling and grinding processes. In order to improve work efficiency and capacity to meet their customers' needs, the company applied automation equipment manipulators and zero clamping systems for several years, and later developed its own products. It now assists customers in planning and utilization of their zero-point clamping system.

### Zero-Point-X3



Ming-Jing's aim is to help enhance the global competitiveness of processing industries and allow more processors to apply their zero-point clamping system on their production lines, in accordance to the current trend of global industry 4.0.

In the past, it could only rely on imported clamping system for automation, but the cost was very high. It was only a fantasy for SMEs to introduce automation systems. Ming Jing hopes that after using their zero-point clamping system, it will allow Taiwan's traditional industry to upgrade and gradually move towards Industry 4.0.

Ming-Jing has delivered to major countries such as Japan, the U.S., and Europe. The company also continues to promote automation with partners.

### Base Plate FJ-AB11



# SMART LOGISTICS

- Robots and Cobots
- Automated Guided Vehicle
- Automatic Storage Retrieval System

# Evermore®

EVERMORE MACHINE CO., LTD.

勤堃機械股份有限公司

<http://www.evermore-tools.com/>

Established in 1979 specializing in the manufacture of Keyless Drill Chuck under the brand names Evermore and Golden Goose.

The company is always pushing ahead and improving business operations, product quality, developing new technology, and stabilizing production capacity. In 1992, the company set up its VDI department producing VDI turning/milling tool holder. In 2002, it successfully began producing CNC tool holder, Boring Tooling System, tool holder and other precision machine accessories. In 2008, the company started its operation in the manufacturing and integrated distribution of professional industrial robots, as well as relevant planning and design of automated production systems.

## ■ CNC Robot Arm-Robot Palleting MPL 180



## ■ CNC Robot Arm-Low Payloads RH 12-1.37



## ■ CNC Robot Arm-High Payloads RH85-2.23



With its specialization in hardware and software design, Evermore is able to provide satisfactory solutions in helping customers lower cost, enhance production efficiency and product quality. Evermore's philosophy is that their products will totally satisfy its customer demands.

# HIWIN®

HIWIN TECHNOLOGIES CORP.

上銀科技股份有限公司

HIWIN industrial robot includes SCARA, 6 Axis, Delta can fulfil the demand of complex pick and place, sorting function in the logistics equipment and material handling processes. HIWIN robots integrate with CCD vision system, can connect different work stations smoothly to implement logistics material handling with high speed dynamic tracking, pick and place function precisely to solve customer's engineering requirement and different layout. HIWIN robots' reliability improve the productivity of the logistics handling processes.

HIWIN's single axis robot adds the function of linear axis motion with the SCARA & 6 Axis robot. One robot can take care of multiple stations with balanced cycle time and layout flexibility. Create value added automation in the logistics operation.

Articulated Robot / SCARA Robot / Wafer Robot / KA / SSA



HIWIN i4.0BS (Intelligent 4.0 Ball screw) is the first ball screw in the world that can be mass produced to achieve smart manufacturing for Industry 4.0. With patented multi-function sensors and expert algorithm, users can monitor its service life, heat deformation, vibration, and lubrication. HIWIN developed a customized App to remote monitor conditions of multiple machines, help users to plan production and pre-schedule maintenance, and improve productivity by preventing machines' unexpected stop.

HIWIN commits to intelligent automation and offers various types of robots, including wafer, 6-axis, Delta, SCARA and medical robots. They help to reduce human labor, including people working in hazardous environments, thus improving human life.



# TOUCHÉ SOLUTIONS

MECHAVISION INC.  
原見精機股份有限公司

<https://www.touche.solutions/en/>

In a world of “small-volume and large-variety” production to satisfy diversified demands, current safety solutions eliminate the most powerful and flexible resource on the production line: humans. Touché Solutions believes the future of modern flexible production is human-robot collaboration. T-Skin of Touché Solutions is helpful for industrial robots to fulfill the safety requirements for human-robot collaboration, and provides options to embedded and aftermarket technology.

## ■ TAB002A-P



Touché Solutions understands certification gives critical reassurance to its customers. It's proud to be compliant with ISO/TS 15066, and employs the German PILZ robot measurement system PRMS, to validate T-Skin in line with ISO/TS 15066.

Today, Touché Solutions operates engineering and manufacturing facilities in Taiwan and maintains a global presence with sales and technical support in Japan, Singapore, China, and the US. It has solid global partnerships with ABB, EPSON, FANUC, KAWASAKI and MITSUBISHI ELECTRIC to ensure its product line interoperates with the widest range of robot manufacturers and models in the industry.

## ■ T-Skin compatible with Kawasaki RS007L



# TM TECHMAN ROBOT

## TECHMAN ROBOT INC. 達明機器人股份有限公司

<https://www.tm-robot.com/en/>

Techman Robot is a leading collaborative robot and vision technologies company, dedicated to improving the world of work for businesses and their people through robotic technology applications. The company believes that the right robotic technology applications can make a world of difference to performance, efficiency and productivity, even creating a lasting positive impact on industries.

### Stand-Alone Cobot Solution

The stand-alone cobot solution is designed to be smart and simple, to optimize collaboration between robots and humans. Unlike other industrial and collaborative robots in the market, TM Robot comes with a smart vision system (TM Vision) that is embedded from the outset, making for greater precision. TM Robot also runs with their own, in-house designed software (TMflow) that allows operators to handle the robot with greater ease without any coding required.



They offer two series of cobot solutions – regular payload and medium-heavy payload. These series represent various sizes and payload capacities to match specific tasks and requirements. Each stand-alone cobot solution includes a robot arm, equipped with TM Vision and TMflow. They also provide task-compatible end effectors and peripherals (TM Plug&Play) that work together seamlessly. TM Robot mobile series can also be easily integrated with an automated guided vehicle for applications that require mobility to switch between multiple workstations.

### TM5



### TM12



### TM14





**CHINA MOTOR CORPORATION**  
**綠捷股份有限公司**  
[www.greentrans-agv.com](http://www.greentrans-agv.com)

China Motor Corporation (CMC) started out as a commercial vehicle manufacturer in 1969. It dominates Taiwan's commercial vehicle market and cooperates with Mitsubishi Motors to produce and distribute a variety of best-selling models. The company's business philosophy is guided by the principles: "Harmony, Innovation, Top, and Sustainability" (HITS).

Mobile Robot MR150



In order to improve production efficiency and quality, CMC promotes the Set Parts Supply in 2003 and Unmanned Material Supply system by AGV in 2010, to realize smart manufacturing. With years of experience in digital factory, production line planning and automation, CMC started to develop its AGV business in 2011. In the future, the company will continue to develop its core business including passenger, commercial and new energy vehicles, and to support new energy and innovation business as its all-round strategy for a brighter future.

Mobile Robot MR100



# GPM 均豪精密

## GALLANT PRECISION MACHINING CO., LTD. 均豪精密工業股份有限公司

<http://www.gpmcorp.com.tw/en-global>

Gallant Precision Machining Co., Ltd. (GPM) (TAIEX:5443) specializes in providing solutions for smart manufacturing, advanced process equipment for the semiconductor industry, and process equipment for the display industry. GPM has a comprehensive range of smart manufacturing solutions, with customers and service locations in Taiwan, North America, Southeast Asia, China, etc.

### Material Handling AGV



### Forklift AGV



### AGV Mobile Robot



GPM is committed to providing first-rate technology, products and service to help customers innovate processes and enhance core competitiveness. The company's main business products and services are Semiconductor Industry Process & Detection Equipment, which it has independent key technology of IC pick & place as well as molding. It provides one-stop service for design, manufacturing, assembly and testing. For FPD Industry Process & Inspection Equipment, GPM focused on developing leading technology for new processes and equipment. In Solutions for Smart Manufacturing, GPM integrates nearly 43 years of experience in promoting automation systems and intelligent manufacturing in the display, semiconductor, and solar power industries. GPM's smart transportation system has system integration to information system, field equipment status, process characteristics and more.





**IAMECH TECHNOLOGY INC.**  
**漢錐科技股份有限公司**

<https://www.iamech.com.tw/>

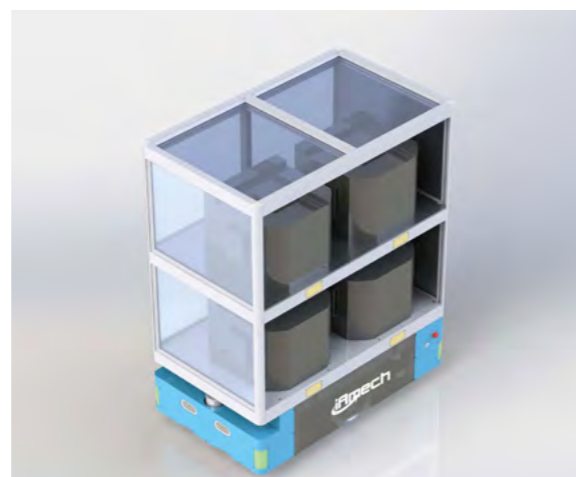
iAmech was founded in 2009 with the mission of elevating people's quality of life by creating "Intelligent Automation Mechanics" - that logistics operation can be better, faster, and more compact to implement. Today, iAmech automates factory production lines, warehouses, and ecommerce order fulfillment centers to better people's online purchase experiences.

In 2013, iAmech unveiled the first cross belt sortation system. From there, it developed 5 different product lines, including: Automatic Storage and Retrieval System (AS/RS), High-Speed Sortation System, Autonomous Mobile System AGV/AMR, Intelligent Material Handling System and Smart Logistics Peripheral Equipment - which offers clients premium automation system integration service.

**Collaborative AMR-Robotic Arm**



**Collaborative AMR-Picking Station**



With the advantages of products made in Taiwan, reliable quality products, years of professional experiences, high efficiency and world-class customer support, iAmech achieved partnership with different famous brands across Taiwan and overseas.

In recent years it has actively expanded overseas. iAmech has already established a representative office in Malaysia with an engineer and service team.

The company has also actively introduced AR technology into the logistics process, such as smart batch picking and storage, pick-to-light guidance, and onsite application for employee training and remote support. Furthermore, iAmech also combines AI technology, such as voice and image recognition. It is committed to bring clients the latest logistics technology and after-sales service in order to shape various operations better, faster and smarter.

**Applicable AMR-Forklift AMR**



**Applicable AMR-Lifting AMR**





**NOVELTEK INDUSTRIAL  
MANUFACTURING INC.  
恆智重機股份有限公司**

<http://www.nove-ltek.com/>

NOVELTEK Industrial Manufacturing Inc., (NOVELTEK), is a 30-year manufacturer of powered and manual material handling equipment in Taiwan. The company supplies all series of material handling equipment while assisting customers in customizing this equipment with certain specifications. Whether you are looking for forklifts that can safely lift extremely heavy objects or small indoor machines that place items high on top of shelves, NOVELTEK guarantees you its quality for 18 months! As of 2021, due to its product diversity, material safety, excellent manufacturing, and management experience, NOVELTEK has already exported its products to 38 countries in the world.

Advanced Powered Pallet Truck ART-15



One of the entry-level material handling equipment in NOVELTEK is the power pallet trucks. Power pallet trucks are electric pallet trucks that are much smaller and simpler material handling equipment than forklifts. Powered by batteries, the power pallet truck allows for easier driving, lifting, and stacking of heavy pallets. It's also beneficial for the operator since it only requires a press of a button to lift and lower the loads. Since these vehicles do not have cabs as they are quite small, to operate a pallet jack, the worker walks behind the trucks and steers them with the handle.

Advanced Powered Pallet Truck-Auto Guided Vehicle APT-20+EPS





PASSION MOBILITY LTD.  
沛昇動能有限公司

PASSION MOBILITY  
沛昇動能有限公司

<http://www.passionmobility.com/?l=en-us>

Passion Mobility develops autonomous technologies and designs electric-powered products to meet the ever-changing needs of automation and material handling. Main products include: Tkart, the most cost-effective solution of implementing factory, warehousing and logistics automation, and Ukart with tracking functions for people and goods.

The latest products Tkart T200 with A.I. Embedded Vision Navigation and Ukart U200, New Entry Level AGV are ready to launch.

AGV-T200-2



AGV-T200-3



Smart Follow-U200-1



Passion Mobility is committed to excellence in providing innovation designs and products for autonomous solutions. The company believes that continuing innovation and strong customer support is the key to long term viability of the company.



TECO ELECTRIC & MACHINERY CO., LTD.  
東元電機股份有限公司

<https://www.teco.com.tw/en>

Founded in 1956 for motor production, TECO Electric & Machinery Co., Ltd. (TAIEX:1504) has evolved to a major business group. It spans from heavy electric equipment, home appliances, information technology, and more. Its business scope covers over 100 cities in more than 40 countries. In recent years, the conglomerate developed and expanded to renewable energy industries such as EV powertrain system, offshore wind power business, and solar power energy storage projects.

AGV



AGV Follower



TECO develops, manufactures, and services sophisticated value-added electrification solutions. It focuses on bringing the latest technologies for motors, drives, gears as well as engineered system solutions.

TECO Automation and Intelligent System Products are capable of offering forward-looking automated industrial application services. It includes servo-driving technology, PLC and HMI human-machine interface, and smart solutions, which can meet the needs of flexibility, energy saving, and high performance of production lines.

# Toptek

TOPTTEK AUTOMATION CO., LTD.  
上研機電股份有限公司

<http://www.toptek.com.tw/>

Toptek Automation Co., LTD. (Toptek) was founded in 1999, about 22 years ago. The tenet of the company is to apply its techniques and modularized concept to establish the most popular product and service. Its major products are the automatic handling devices applied in metal working machine tools. Because of the quality and performance, its products have been assigned as the automatic accessories for Victor Taichung Machinery, Ta-Tung Okuma, Tongtai, Goodway, Takisawa and YCM. Toptek's company philosophy is "To create added-value for customers; To make wonderful stage for employees".

## Stocker Type WF09-5



## Tower Type WF09-2



Now, Toptek has established the highest market share in Taiwan. It plans to proceed in the research of design and service in electro-mechanism field to establish the best service team. Toptek hopes to increase the competitiveness of their customers via its powerful automatic tools. In the future, the company plans to span to other fields like material flow, auto assembly line and other automatic production lines.



**CHAIN WE MACHINERY CO., LTD.**  
**川岳機械股份有限公司**

<https://www.conveyor-manufacturer.com/>

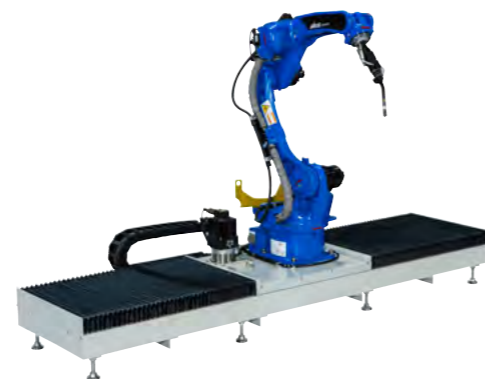
Chain We Machinery Co., Ltd. was established in 1988. The company develops automated transport equipment for unmanned test tube inspection centers and vacuum layers for high-efficiency thin-film solar panels. Chain We Machinery provides customized design and services to fulfill the needs of various industries.

The unmanned test tube inspection center module provides medical inspection center for test tube reception, pre-processing, classification, inspection, storage, re-inspection, destruction and other operations. The inspection results are fed-back with electronic information, combined with medical system identification and testing. The software can quickly and automatically perform a large number of test processing, which can be widely used in blood tests, drug and poison tests, genetic diagnostic tests, etc.

Automatic Conveyor Systems 190411A001



The Seventh Axis Linear Module



Chain We Machinery cooperates with Japanese companies to produce high-efficiency thin-film solar panel vacuum lamination modules equipment, which provide automatic vacuum lamination and inspection functions. The stability and high performance of the modules is conducive to downstream manufacturers in producing the latest large-scale thin-film solar panels.

In addition, as each industry responds to the advent of Industry 4.0, continuous transformation of products and intelligent automated production lines continue to be built. The standardized modules produced by Chain We Machinery can reduce design errors, shorter delivery time, and reduce costs.

Pallet Elevator L180807





**IAMECH TECHNOLOGY INC.**  
**漢銖科技股份有限公司**

<https://www.iamech.com.tw/>

iAmech was founded in 2009 with the mission of elevating people's quality of life by creating "Intelligent Automation Mechanics" - that logistics operation can be better, faster, and more compact to implement. Today, iAmech automates factory production lines, warehouses, and ecommerce order fulfillment centers to better people's online purchase experiences.

In 2013, iAmech unveiled the first cross belt sortation system. From there, it developed 5 different product lines, including: Automatic Storage and Retrieval System (AS/RS), High-Speed Sortation System, Autonomous Mobile System AGV/AMR, Intelligent Material Handling System and Smart Logistics Peripheral Equipment - which offers clients premium automation system integration service.

Trilateral Stacker Crane AS/RS



With the advantages of products made in Taiwan, reliable quality products, years of professional experiences, high efficiency and world-class customer support, iAmech achieved partnership with different famous brands across Taiwan and overseas.

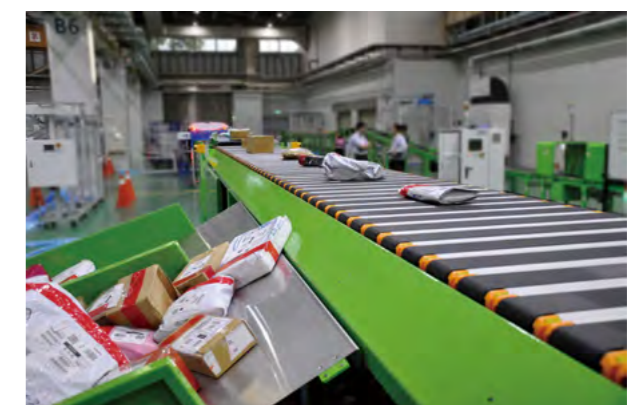
In recent years it has actively expanded overseas. iAmech has already established a representative office in Malaysia with an engineer and service team.

The company has also actively introduced AR technology into the logistics process, such as smart batch picking and storage, pick-to-light guidance, and onsite application for employee training and remote support. Furthermore, iAmech also combines AI technology, such as voice and image recognition. It is committed to bring clients the latest logistics technology and after-sales service in order to shape various operations better, faster and smarter.

Applicable AMR-Conveyor AMR



Narrow-Carrier Cross Belt Sorter





高橋自動化科技股份有限公司  
TERA AUTOTECH CORPORATION

TERA AUTOTECH CORPORATION  
高橋自動化科技股份有限公司

<https://www.teraauto.com.tw/eng/>

Tera Auto Tech Corporation (TAIEX:6234) is a major factory of automation equipment in Taiwan. Founded in 1990, it has accumulated a lot of experience and technology in automation related fields, and has a long-term understanding of the industry's needs.

### Automatic Storage and Logistics



Tera Auto has successfully introduced a variety of automation manufacturing and related application equipment and products. Some of its product lines include: TFT-LCD panel handling system, clean room stocker; solar CIGS whole plant handling; ultra-high Automatic Storage Retrieval System, mini-load Automatic Storage Retrieval System, industrial Automatic Storage Retrieval System; factory intelligence and PCB micro drills, and milling cutters. Tera Auto can meet the needs of various industries with its diversified product lines.

### Automatic Storage and Logistics







Organized by



Bureau of Foreign Trade,  
MOEA

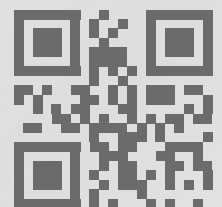
Implemented by



Taiwan External Trade  
Development Council



Precision Machinery  
Research & Development Center



<https://twmt.tw/>